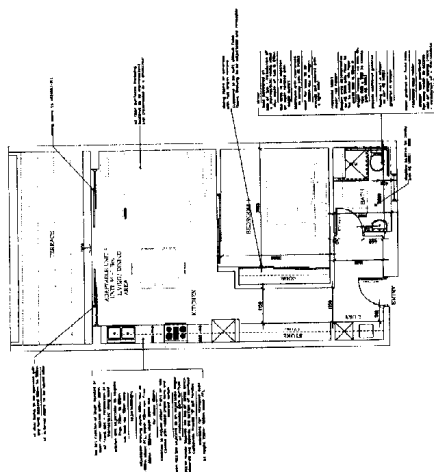
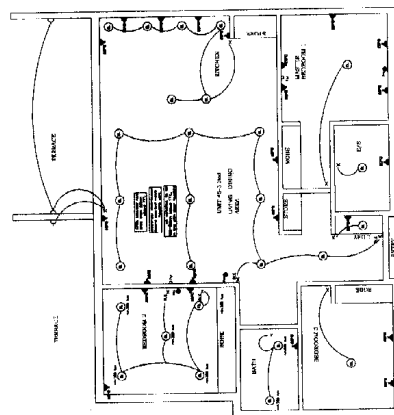


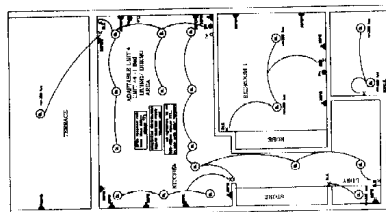
ADAPTABLE LAYOUT No.5 - UNIT 45
SCALE 1:50



ADAPTABLE LAYOUT No.4 - UNIT 44
SCALE 1:50



ADAPTABLE LAYOUT No.5 - UNIT 45 - REFLECTED CEILING PLAN
SCALE 1:50



ADAPTABLE LAYOUT No.4 - UNIT 44 - REFLECTED CEILING PLAN
SCALE 1:50

[illegible]

REVISIONS

NO.	DESCRIPTION	DATE
1	ISSUED FOR TENDER	15/01/02

CLIENT

THE LONDON DEVELOPMENT CORPORATION

PROJECT

THE LONDON DEVELOPMENT CORPORATION

LOCATION

THE LONDON DEVELOPMENT CORPORATION

SCALE

1:100

DATE

15/01/02

BY

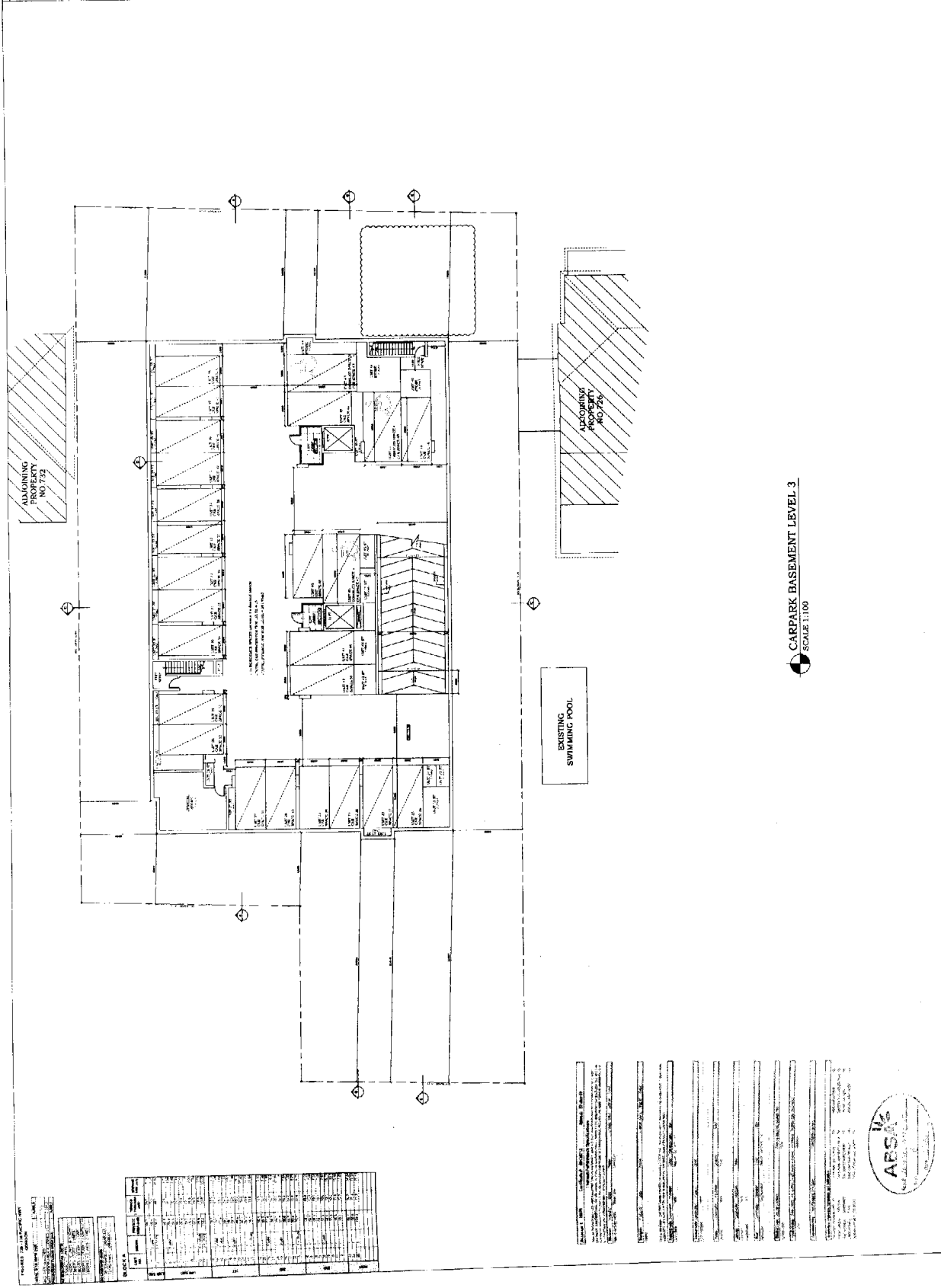
THE LONDON DEVELOPMENT CORPORATION

CHECKED BY

THE LONDON DEVELOPMENT CORPORATION

APPROVED BY

THE LONDON DEVELOPMENT CORPORATION



REVISIONS

NO.	DESCRIPTION	DATE
1	ISSUED FOR TENDER	15/01/02

CLIENT

THE LONDON DEVELOPMENT CORPORATION

PROJECT

THE LONDON DEVELOPMENT CORPORATION

LOCATION

THE LONDON DEVELOPMENT CORPORATION

SCALE

1:100

DATE

15/01/02

BY

THE LONDON DEVELOPMENT CORPORATION

CHECKED BY

THE LONDON DEVELOPMENT CORPORATION

APPROVED BY

THE LONDON DEVELOPMENT CORPORATION

REVISIONS

NO.	DESCRIPTION	DATE
1	ISSUED FOR TENDER	15/01/02

CLIENT

THE LONDON DEVELOPMENT CORPORATION

PROJECT

THE LONDON DEVELOPMENT CORPORATION

LOCATION

THE LONDON DEVELOPMENT CORPORATION

SCALE

1:100

DATE

15/01/02

BY

THE LONDON DEVELOPMENT CORPORATION

CHECKED BY

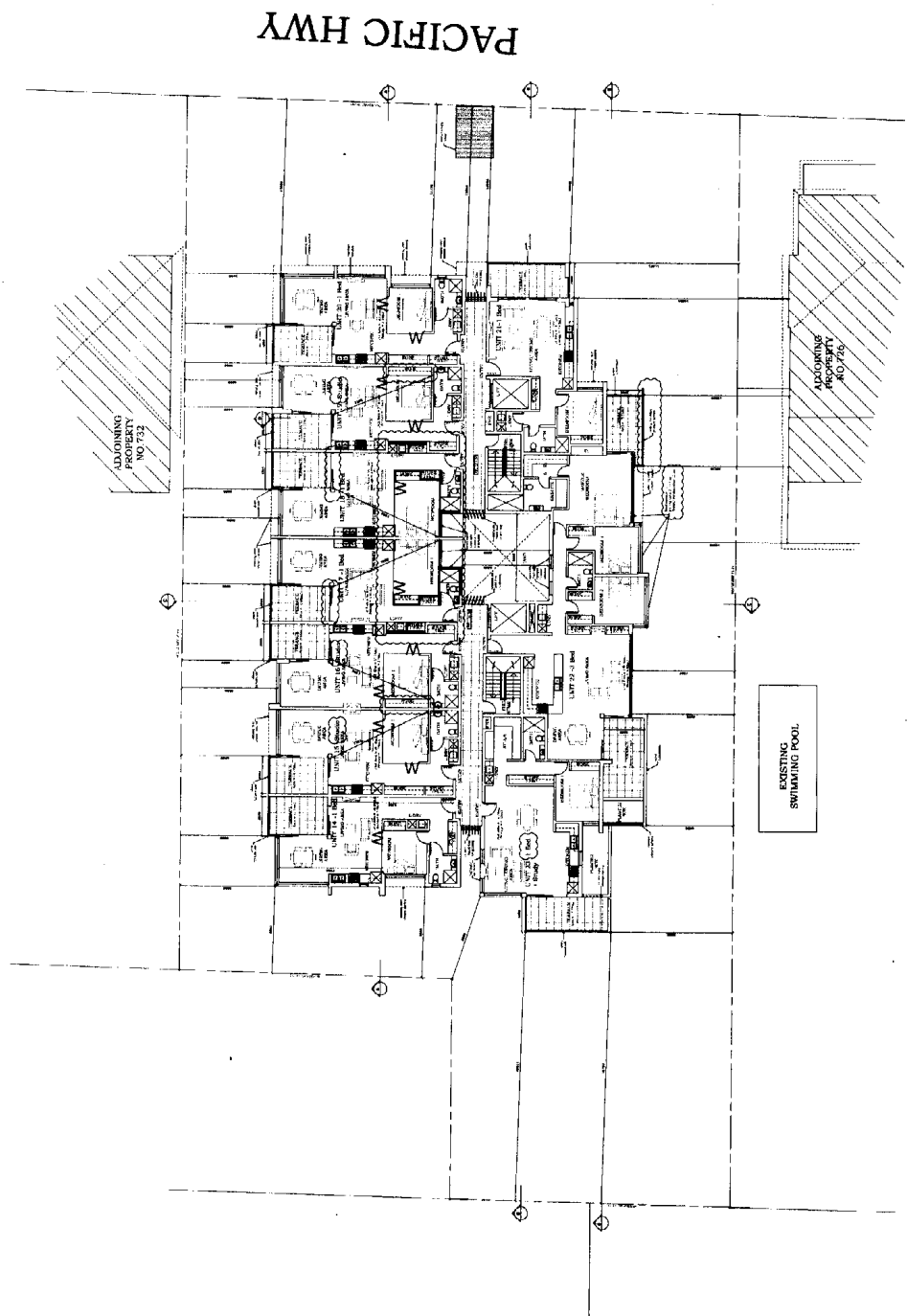
THE LONDON DEVELOPMENT CORPORATION

APPROVED BY

THE LONDON DEVELOPMENT CORPORATION



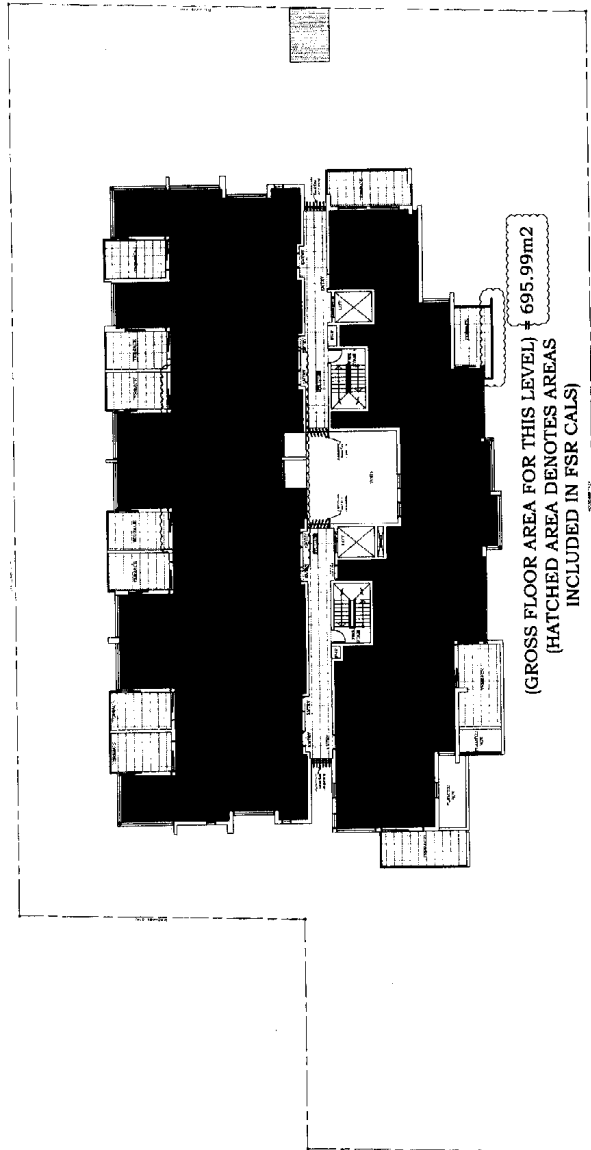
Advertisement: **THE NEW** **1994** **SAAB 900** **4-DOOR** **1.9** **16V** **200** **HP** **2.0** **16V** **230** **HP** **2.3** **16V** **250** **HP** **2.8** **16V** **300** **HP** **3.0** **16V** **340** **HP** **3.4** **16V** **380** **HP** **4.0** **16V** **420** **HP** **4.6** **16V** **460** **HP** **5.0** **16V** **500** **HP** **5.4** **16V** **540** **HP** **6.0** **16V** **580** **HP** **6.6** **16V** **620** **HP** **7.0** **16V** **660** **HP** **7.4** **16V** **700** **HP** **7.8** **16V** **740** **HP** **8.2** **16V** **780** **HP** **8.6** **16V** **820** **HP** **9.0** **16V** **860** **HP** **9.4** **16V** **900** **HP** **9.8** **16V** **940** **HP** **10.2** **16V** **980** **HP** **10.6** **16V** **1020** **HP** **11.0** **16V** **1060** **HP** **11.4** **16V** **1100** **HP** **11.8** **16V** **1140** **HP** **12.2** **16V** **1180** **HP** **12.6** **16V** **1220** **HP** **13.0** **16V** **1260** **HP** **13.4** **16V** **1300** **HP** **13.8** **16V** **1340** **HP** **14.2** **16V** **1380** **HP** **14.6** **16V** **1420** **HP** **15.0** **16V** **1460** **HP** **15.4** **16V** **1500** **HP** **15.8** **16V** **1540** **HP** **16.2** **16V** **1580** **HP** **16.6** **16V** **1620** **HP** **17.0** **16V** **1660** **HP** **17.4** **16V** **1700** **HP** **17.8** **16V** **1740** **HP** **18.2** **16V** **1780** **HP** **18.6** **16V** **1820** **HP** **19.0** **16V** **1860** **HP** **19.4** **16V** **1900** **HP** **19.8** **16V** **1940** **HP** **20.2** **16V** **1980** **HP** **20.6** **16V** **2020** **HP** **21.0** **16V** **2060** **HP** **21.4** **16V** **2100** **HP** **21.8** **16V** **2140** **HP** **22.2** **16V** **2180** **HP** **22.6** **16V** **2220** **HP** **23.0** **16V** **2260** **HP** **23.4** **16V** **2300** **HP** **23.8** **16V** **2340** **HP** **24.2** **16V** **2380** **HP** **24.6** **16V** **2420** **HP** **25.0** **16V** **2460** **HP** **25.4** **16V** **2500** **HP** **25.8** **16V** **2540** **HP** **26.2** **16V** **2580** **HP** **26.6** **16V** **2620** **HP** **27.0** **16V** **2660** **HP** **27.4** **16V** **2700** **HP** **27.8** **16V** **2740** **HP** **28.2** **16V** **2780** **HP** **28.6** **16V** **2820** **HP** **29.0** **16V** **2860** **HP** **29.4** **16V** **2900** **HP** **29.8** **16V** **2940** **HP** **30.2** **16V** **2980** **HP** **30.6** **16V** **3020** **HP** **31.0** **16V** **3060** **HP** **31.4** **16V** **3100** **HP** **31.8** **16V** **3140** **HP** **32.2** **16V** **3180** **HP** **32.6** **16V** **3220** **HP** **33.0** **16V** **3260** **HP** **33.4** **16V** **3300** **HP** **33.8** **16V** **3340** **HP** **34.2** **16V** **3380** **HP** **34.6** **16V** **3420** **HP** **35.0** **16V** **3460** **HP** **35.4** **16V** **3500** **HP** **35.8** **16V** **3540** **HP** **36.2** **16V** **3580** **HP** **36.6** **16V** **3620** **HP** **37.0** **16V** **3660** **HP** **37.4** **16V** **3700** **HP** **37.8** **16V** **3740** **HP** **38.2** **16V** **3780** **HP** **38.6** **16V** **3820** **HP** **39.0** **16V** **3860** **HP** **39.4** **16V** **3900** **HP** **39.8** **16V** **3940** **HP** **40.2** **16V** **3980** **HP** **40.6** **16V** **4020** **HP** **41.0** **16V** **4060** **HP** **41.4** **16V** **4100** **HP** **41.8** **16V** **4140** **HP** **42.2** **16V** **4180** **HP** **42.6** **16V** **4220** **HP** **43.0** **16V** **4260** **HP** **43.4** **16V** **4300** **HP** **43.8** **16V** **4340** **HP** **44.2** **16V** **4380** **HP** **44.6** **16V** **4420** **HP** **45.0** **16V** **4460** **HP** **45.4** **16V** **4500** **HP** **45.8** **16V** **4540** **HP** **46.2** **16V** **4580** **HP** **46.6** **16V** **4620** **HP** **47.0** **16V** **4660** **HP** **47.4** **16V**

[illegible]

FIRST FLOOR PLAN
SCALE 1:100

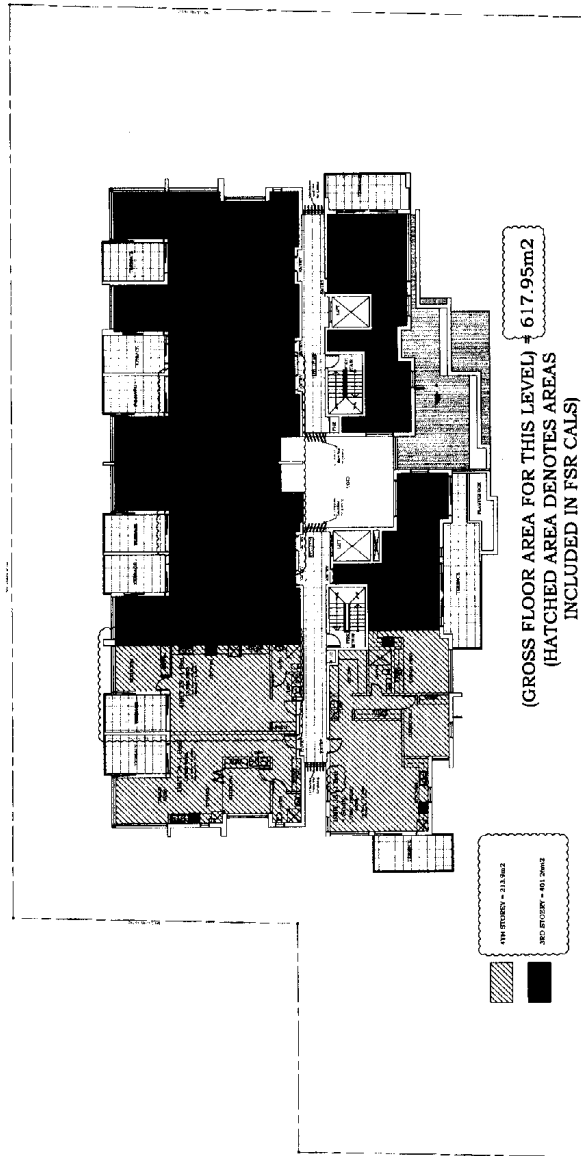
[illegible]

PACIFIC HWY



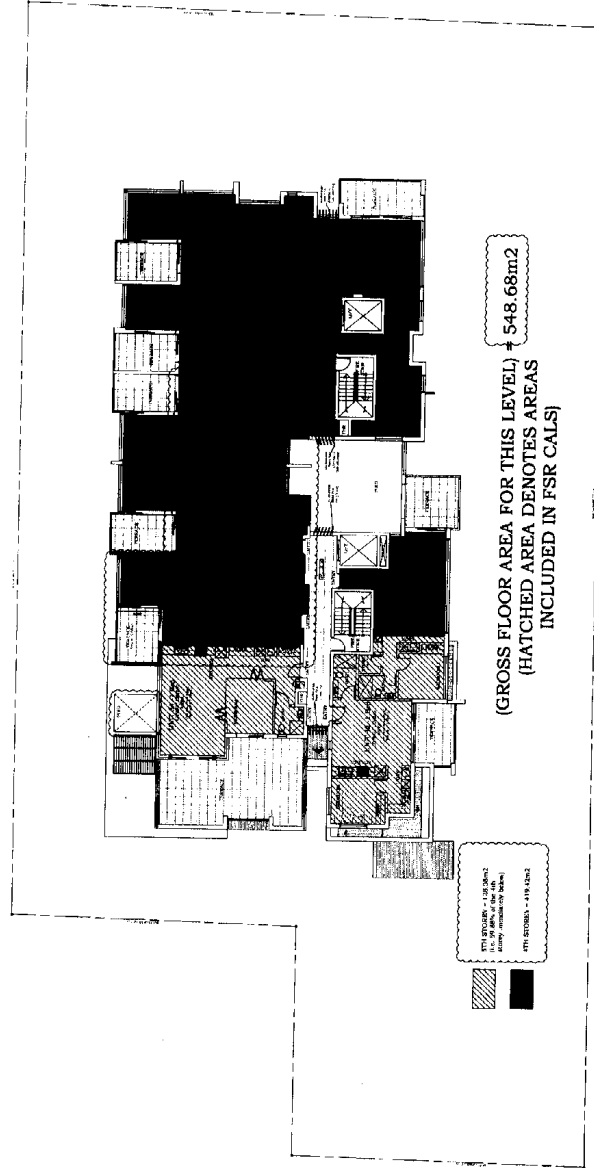
FSR CALCULATION DIAGRAM:- FIRST FLOOR PLAN
 SCALE: 1:100

<p>NOTES:</p> <ol style="list-style-type: none"> 1. The building is to be constructed in accordance with the Building Code of Australia (BCA) 2011. 2. The building is to be constructed in accordance with the Building Code of Australia (BCA) 2011. 3. The building is to be constructed in accordance with the Building Code of Australia (BCA) 2011. 4. The building is to be constructed in accordance with the Building Code of Australia (BCA) 2011. 5. The building is to be constructed in accordance with the Building Code of Australia (BCA) 2011. 6. The building is to be constructed in accordance with the Building Code of Australia (BCA) 2011. 7. The building is to be constructed in accordance with the Building Code of Australia (BCA) 2011. 8. The building is to be constructed in accordance with the Building Code of Australia (BCA) 2011. 9. The building is to be constructed in accordance with the Building Code of Australia (BCA) 2011. 10. The building is to be constructed in accordance with the Building Code of Australia (BCA) 2011. 	<p>DATE: 15/01/2012</p> <p>BY: [Signature]</p> <p>FOR: [Signature]</p> <p>PROJECT: [Signature]</p> <p>LOCATION: [Signature]</p> <p>SCALE: 1:100</p> <p>SK 1/A</p>
---	---



REVISION A 1. REVISION 1 2. REVISION 2 3. REVISION 3 4. REVISION 4 5. REVISION 5 6. REVISION 6 7. REVISION 7 8. REVISION 8 9. REVISION 9 10. REVISION 10 11. REVISION 11 12. REVISION 12 13. REVISION 13 14. REVISION 14 15. REVISION 15 16. REVISION 16 17. REVISION 17 18. REVISION 18 19. REVISION 19 20. REVISION 20 21. REVISION 21 22. REVISION 22 23. REVISION 23 24. REVISION 24 25. REVISION 25 26. REVISION 26 27. REVISION 27 28. REVISION 28 29. REVISION 29 30. REVISION 30 31. REVISION 31 32. REVISION 32 33. REVISION 33 34. REVISION 34 35. REVISION 35 36. REVISION 36 37. REVISION 37 38. REVISION 38 39. REVISION 39 40. REVISION 40 41. REVISION 41 42. REVISION 42 43. REVISION 43 44. REVISION 44 45. REVISION 45 46. REVISION 46 47. REVISION 47 48. REVISION 48 49. REVISION 49 50. REVISION 50 51. REVISION 51 52. REVISION 52 53. REVISION 53 54. REVISION 54 55. REVISION 55 56. REVISION 56 57. REVISION 57 58. REVISION 58 59. REVISION 59 60. REVISION 60 61. REVISION 61 62. REVISION 62 63. REVISION 63 64. REVISION 64 65. REVISION 65 66. REVISION 66 67. REVISION 67 68. REVISION 68 69. REVISION 69 70. REVISION 70 71. REVISION 71 72. REVISION 72 73. REVISION 73 74. REVISION 74 75. REVISION 75 76. REVISION 76 77. REVISION 77 78. REVISION 78 79. REVISION 79 80. REVISION 80 81. REVISION 81 82. REVISION 82 83. REVISION 83 84. REVISION 84 85. REVISION 85 86. REVISION 86 87. REVISION 87 88. REVISION 88 89. REVISION 89 90. REVISION 90 91. REVISION 91 92. REVISION 92 93. REVISION 93 94. REVISION 94 95. REVISION 95 96. REVISION 96 97. REVISION 97 98. REVISION 98 99. REVISION 99 100. REVISION 100 101. REVISION 101 102. REVISION 102 103. REVISION 103 104. REVISION 104 105. REVISION 105 106. REVISION 106 107. REVISION 107 108. REVISION 108 109. REVISION 109 110. REVISION 110 111. REVISION 111 112. REVISION 112 113. REVISION 113 114. REVISION 114 115. REVISION 115 116. REVISION 116 117. REVISION 117 118. REVISION 118 119. REVISION 119 120. REVISION 120 121. REVISION 121 122. REVISION 122 123. REVISION 123 124. REVISION 124 125. REVISION 125 126. REVISION 126 127. REVISION 127 128. REVISION 128 129. REVISION 129 130. REVISION 130 131. REVISION 131 132. REVISION 132 133. REVISION 133 134. REVISION 134 135. REVISION 135 136. REVISION 136 137. REVISION 137 138. REVISION 138 139. REVISION 139 140. REVISION 140 141. REVISION 141 142. REVISION 142 143. REVISION 143 144. REVISION 144 145. REVISION 145 146. REVISION 146 147. REVISION 147 148. REVISION 148 149. REVISION 149 150. REVISION 150 151. REVISION 151 152. REVISION 152 153. REVISION 153 154. REVISION 154 155. REVISION 155 156. REVISION 156 157. REVISION 157 158. REVISION 158 159. REVISION 159 160. REVISION 160 161. REVISION 161 162. REVISION 162 163. REVISION 163 164. REVISION 164 165. REVISION 165 166. REVISION 166 167. REVISION 167 168. REVISION 168 169. REVISION 169 170. REVISION 170 171. REVISION 171 172. REVISION 172 173. REVISION 173 174. REVISION 174 175. REVISION 175 176. REVISION 176 177. REVISION 177 178. REVISION 178 179. REVISION 179 180. REVISION 180 181. REVISION 181 182. REVISION 182 183. REVISION 183 184. REVISION 184 185. REVISION 185 186. REVISION 186 187. REVISION 187 188. REVISION 188 189. REVISION 189 190. REVISION 190 191. REVISION 191 192. REVISION 192 193. REVISION 193 194. REVISION 194 195. REVISION 195 196. REVISION 196 197. REVISION 197 198. REVISION 198 199. REVISION 199 200. REVISION 200 201. REVISION 201 202. REVISION 202 203. REVISION 203 204. REVISION 204 205. REVISION 205 206. REVISION 206 207. REVISION 207 208. REVISION 208 209. REVISION 209 210. REVISION 210 211. REVISION 211 212. REVISION 212 213. REVISION 213 214. REVISION 214 215. REVISION 215 216. REVISION 216 217. REVISION 217 218. REVISION 218 219. REVISION 219 220. REVISION 220 221. REVISION 221 222. REVISION 222 223. REVISION 223 224. REVISION 224 225. REVISION 225 226. REVISION 226 227. REVISION 227 228. REVISION 228 229. REVISION 229 230. REVISION 230 231. REVISION 231 232. REVISION 232 233. REVISION 233 234. REVISION 234 235. REVISION 235 236. REVISION 236 237. REVISION 237 238. REVISION 238 239. REVISION 239 240. REVISION 240 241. REVISION 241 242. REVISION 242 243. REVISION 243 244. REVISION 244 245. REVISION 245 246. REVISION 246 247. REVISION 247 248. REVISION 248 249. REVISION 249 250. REVISION 250 251. REVISION 251 252. REVISION 252 253. REVISION 253 254. REVISION 254 255. REVISION 255 256. REVISION 256 257. REVISION 257 258. REVISION 258 259. REVISION 259 260. REVISION 260 261. REVISION 261 262. REVISION 262 263. REVISION 263 264. REVISION 264 265. REVISION 265 266. REVISION 266 267. REVISION 267 268. REVISION 268 269. REVISION 269 270. REVISION 270 271. REVISION 271 272. REVISION 272 273. REVISION 273 274. REVISION 274 275. REVISION 275 276. REVISION 276 277. REVISION 277 278. REVISION 278 279. REVISION 279 280. REVISION 280 281. REVISION 281 282. REVISION 282 283. REVISION 283 284. REVISION 284 285. REVISION 285 286. REVISION 286 2

PACIFIC HWY



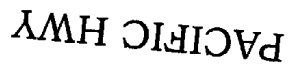
FSR CALCULATION DIAGRAM - THIRD FLOOR PLAN
 SCALE 1:100

<p>REVISIONS</p>	<p>1. The floor plan is a preliminary drawing and is not to be used for construction purposes. It is subject to change without notice. The floor plan is not to be used for any other purpose without the written consent of the architect.</p>	<p>DATE: 10/10/2010 DRAWN BY: [Name] CHECKED BY: [Name] PROJECT: [Name]</p>	<p>DATE: 10/10/2010 DRAWN BY: [Name] CHECKED BY: [Name] PROJECT: [Name]</p>	<p>DATE: 10/10/2010 DRAWN BY: [Name] CHECKED BY: [Name] PROJECT: [Name]</p>	<p>DATE: 10/10/2010 DRAWN BY: [Name] CHECKED BY: [Name] PROJECT: [Name]</p>	<p>DATE: 10/10/2010 DRAWN BY: [Name] CHECKED BY: [Name] PROJECT: [Name]</p>	<p>DATE: 10/10/2010 DRAWN BY: [Name] CHECKED BY: [Name] PROJECT: [Name]</p>	<p>DATE: 10/10/2010 DRAWN BY: [Name] CHECKED BY: [Name] PROJECT: [Name]</p>	<p>DATE: 10/10/2010 DRAWN BY: [Name] CHECKED BY: [Name] PROJECT: [Name]</p>	<p>DATE: 10/10/2010 DRAWN BY: [Name] CHECKED BY: [Name] PROJECT: [Name]</p>
------------------	---	--	--	--	--	--	--	--	--	--

(GROSS FLOOR AREA FOR THIS LEVEL) = 246.70m² (i.e. 58.82% of the 4th storey immediately below)
 (TOTAL GROSS FLOOR AREA IN THIS DEVELOPMENT) = 3200.07m²
 (HATCHED AREA DENOTES AREAS INCLUDED IN FSR CALS)

FSR CALCULATION DIAGRAM:- PENTHOUSE FLOOR PLAN
SCALE 1:100

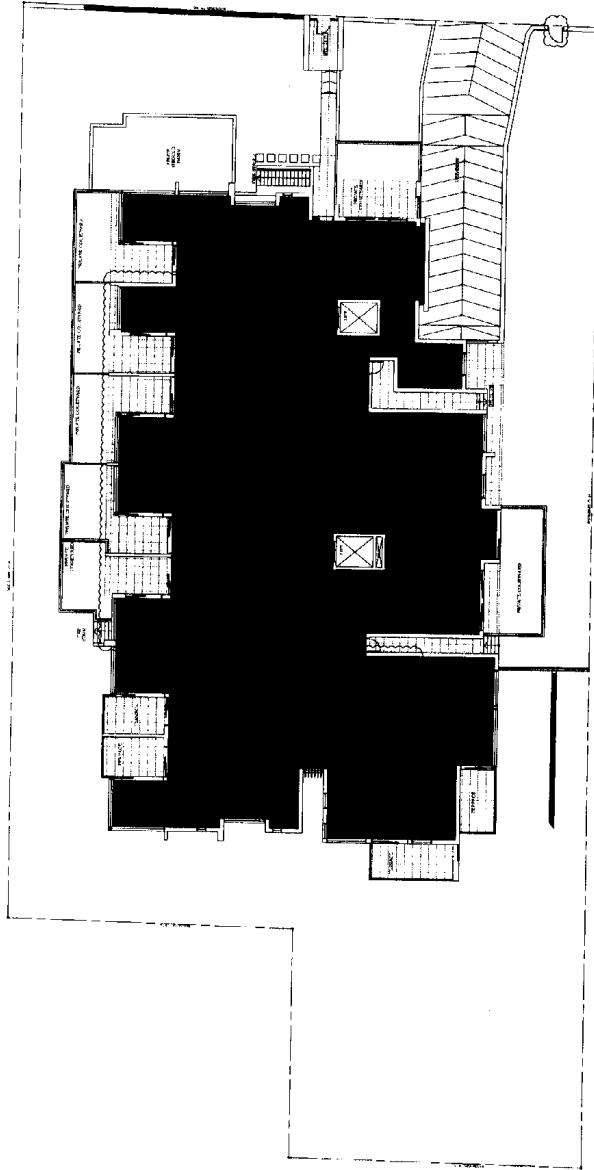
[illegible]



FSR CALCULATION DIAGRAM:- LOWER GROUND FLOOR PLAN
SCALE 1:100

1. NAME (Last, first, middle) 2. GRADE 3. CLASS 4. SCHOOL 5. ADDRESS 6. CITY 7. STATE 8. ZIP 9. PHONE 10. FAX 11. E-MAIL 12. BIRTH DATE 13. BIRTH PLACE 14. BIRTH TIME 15. BIRTH WEIGHT 16. BIRTH HEIGHT 17. BIRTH LENGTH 18. BIRTH HEAD CIRCUMFERENCE 19. BIRTH ARM CIRCUMFERENCE 20. BIRTH LEG CIRCUMFERENCE 21. BIRTH PALMAR CIRCUMFERENCE 22. BIRTH MIDDLE FINGER CIRCUMFERENCE 23. BIRTH MIDDLE FINGER LENGTH 24. BIRTH MIDDLE FINGER BREADTH 25. BIRTH MIDDLE FINGER THICKNESS 26. BIRTH MIDDLE FINGER AREA 27. BIRTH MIDDLE FINGER PERIMETER 28. BIRTH MIDDLE FINGER VOLUME 29. BIRTH MIDDLE FINGER MASS 30. BIRTH MIDDLE FINGER DENSITY 31. BIRTH MIDDLE FINGER STRENGTH 32. BIRTH MIDDLE FINGER FLEXIBILITY 33. BIRTH MIDDLE FINGER ENDURANCE 34. BIRTH MIDDLE FINGER SPEED 35. BIRTH MIDDLE FINGER AGILITY 36. BIRTH MIDDLE FINGER COORDINATION 37. BIRTH MIDDLE FINGER BALANCE 38. BIRTH MIDDLE FINGER RHYTHM 39. BIRTH MIDDLE FINGER PATTERN 40. BIRTH MIDDLE FINGER COMPLEXITY 41. BIRTH MIDDLE FINGER ABILITY 42. BIRTH MIDDLE FINGER SKILL 43. BIRTH MIDDLE FINGER KNOWLEDGE 44. BIRTH MIDDLE FINGER WISDOM 45. BIRTH MIDDLE FINGER FAITH 46. BIRTH MIDDLE FINGER HOPE 47. BIRTH MIDDLE FINGER LOVE 48. BIRTH MIDDLE FINGER CHARITY 49. BIRTH MIDDLE FINGER PATIENCE 50. BIRTH MIDDLE FINGER KINDNESS 51. BIRTH MIDDLE FINGER GENTLENESS 52. BIRTH MIDDLE FINGER MEekNESS 53. BIRTH MIDDLE FINGER HUMILITY 54. BIRTH MIDDLE FINGER MODesty 55. BIRTH MIDDLE FINGER SELF-CONTROL 56. BIRTH MIDDLE FINGER TEMPERANCE 57. BIRTH MIDDLE FINGER SObriety 58. BIRTH MIDDLE FINGER CASTITY 59. BIRTH MIDDLE FINGER CHASTITY 60. BIRTH MIDDLE FINGER PURITY 61. BIRTH MIDDLE FINGER CLEANLINESS 62. BIRTH MIDDLE FINGER ORDER 63. BIRTH MIDDLE FINGER NEATNESS 64. BIRTH MIDDLE FINGER TIDINESS 65. BIRTH MIDDLE FINGER ORGANIZATION 66. BIRTH MIDDLE FINGER MANAGEMENT 67. BIRTH MIDDLE FINGER ADMINISTRATION 68. BIRTH MIDDLE FINGER SUPERVISION 69. BIRTH MIDDLE FINGER GUIDANCE 70. BIRTH MIDDLE FINGER INFLUENCE 71. BIRTH MIDDLE FINGER LEADERSHIP 72. BIRTH MIDDLE FINGER AUTHORITY 73. BIRTH MIDDLE FINGER POWER 74. BIRTH MIDDLE FINGER DOMINANCE 75. BIRTH MIDDLE FINGER PREVALENCE 76. BIRTH MIDDLE FINGER PROMINENCE 77. BIRTH MIDDLE FINGER NOTABILITY 78. BIRTH MIDDLE FINGER REPUTATION 79. BIRTH MIDDLE FINGER CREDIT 80. BIRTH MIDDLE FINGER RESPECT 81. BIRTH MIDDLE FINGER ADMIRATION 82. BIRTH MIDDLE FINGER APPRECIATION 83. BIRTH MIDDLE FINGER ESTEEM 84. BIRTH MIDDLE FINGER HONOR 85. BIRTH MIDDLE FINGER GLORY 86. BIRTH MIDDLE FINGER FAME 87. BIRTH MIDDLE FINGER CELEBRITY 88. BIRTH MIDDLE FINGER NOTORIOUSNESS 89. BIRTH MIDDLE FINGER INFAMOUSNESS 90. BIRTH MIDDLE FINGER REPUTATION 91. BIRTH MIDDLE FINGER CREDIT 92. BIRTH MIDDLE FINGER RESPECT 93. BIRTH MIDDLE FINGER ADMIRATION 94. BIRTH MIDDLE FINGER APPRECIATION 95. BIRTH MIDDLE FINGER ESTEEM 96. BIRTH MIDDLE FINGER HONOR 97. BIRTH MIDDLE FINGER GLORY 98. BIRTH MIDDLE FINGER FAME 99. BIRTH MIDDLE FINGER CELEBRITY 100. BIRTH MIDDLE FINGER NOTORIOUSNESS	1. NAME (Last, first, middle) 2. GRADE 3. CLASS 4. SCHOOL 5. ADDRESS 6. CITY 7. STATE 8. ZIP 9. PHONE 10. FAX 11. E-MAIL 12. BIRTH DATE 13. BIRTH PLACE 14. BIRTH TIME 15. BIRTH WEIGHT 16. BIRTH HEIGHT 17. BIRTH LENGTH 18. BIRTH HEAD CIRCUMFERENCE 19. BIRTH ARM CIRCUMFERENCE 20. BIRTH LEG CIRCUMFERENCE 21. BIRTH PALMAR CIRCUMFERENCE 22. BIRTH MIDDLE FINGER CIRCUMFERENCE 23. BIRTH MIDDLE FINGER LENGTH 24. BIRTH MIDDLE FINGER BREADTH 25. BIRTH MIDDLE FINGER THICKNESS 26. BIRTH MIDDLE FINGER AREA 27. BIRTH MIDDLE FINGER PERIMETER 28. BIRTH MIDDLE FINGER VOLUME 29. BIRTH MIDDLE FINGER MASS 30. BIRTH MIDDLE FINGER DENSITY 31. BIRTH MIDDLE FINGER STRENGTH 32. BIRTH MIDDLE FINGER FLEXIBILITY 33. BIRTH MIDDLE FINGER ENDURANCE 34. BIRTH MIDDLE FINGER SPEED 35. BIRTH MIDDLE FINGER AGILITY 36. BIRTH MIDDLE FINGER COORDINATION 37. BIRTH MIDDLE FINGER BALANCE 38. BIRTH MIDDLE FINGER RHYTHM 39. BIRTH MIDDLE FINGER PATTERN 40. BIRTH MIDDLE FINGER COMPLEXITY 41. BIRTH MIDDLE FINGER ABILITY 42. BIRTH MIDDLE FINGER SKILL 43. BIRTH MIDDLE FINGER KNOWLEDGE 44. BIRTH MIDDLE FINGER WISDOM 45. BIRTH MIDDLE FINGER FAITH 46. BIRTH MIDDLE FINGER HOPE 47. BIRTH MIDDLE FINGER LOVE 48. BIRTH MIDDLE FINGER CHARITY 49. BIRTH MIDDLE FINGER PATIENCE 50. BIRTH MIDDLE FINGER KINDNESS 51. BIRTH MIDDLE FINGER GENTLENESS 52. BIRTH MIDDLE FINGER MEekNESS 53. BIRTH MIDDLE FINGER HUMILITY 54. BIRTH MIDDLE FINGER MODesty 55. BIRTH MIDDLE FINGER SELF-CONTROL 56. BIRTH MIDDLE FINGER TEMPERANCE 57. BIRTH MIDDLE FINGER SObriety 58. BIRTH MIDDLE FINGER CASTITY 59. BIRTH MIDDLE FINGER CHASTITY 60. BIRTH MIDDLE FINGER PURITY 61. BIRTH MIDDLE FINGER CLEANLINESS 62. BIRTH MIDDLE FINGER ORDER 63. BIRTH MIDDLE FINGER NEATNESS 64. BIRTH MIDDLE FINGER TIDINESS 65. BIRTH MIDDLE FINGER ORGANIZATION 66. BIRTH MIDDLE FINGER MANAGEMENT 67. BIRTH MIDDLE FINGER ADMINISTRATION 68. BIRTH MIDDLE FINGER SUPERVISION 69. BIRTH MIDDLE FINGER GUIDANCE 70. BIRTH MIDDLE FINGER INFLUENCE 71. BIRTH MIDDLE FINGER LEADERSHIP 72. BIRTH MIDDLE FINGER AUTHORITY 73. BIRTH MIDDLE FINGER POWER 74. BIRTH MIDDLE FINGER DOMINANCE 75. BIRTH MIDDLE FINGER PREVALENCE 76. BIRTH MIDDLE FINGER PROMINENCE 77. BIRTH MIDDLE FINGER NOTABILITY 78. BIRTH MIDDLE FINGER REPUTATION 79. BIRTH MIDDLE FINGER CREDIT 80. BIRTH MIDDLE FINGER RESPECT 81. BIRTH MIDDLE FINGER ADMIRATION 82. BIRTH MIDDLE FINGER APPRECIATION 83. BIRTH MIDDLE FINGER ESTEEM 84. BIRTH MIDDLE FINGER HONOR 85. BIRTH MIDDLE FINGER GLORY 86. BIRTH MIDDLE FINGER FAME 87. BIRTH MIDDLE FINGER CELEBRITY 88. BIRTH MIDDLE FINGER NOTORIOUSNESS 89. BIRTH MIDDLE FINGER INFAMOUSNESS 90. BIRTH MIDDLE FINGER REPUTATION 91. BIRTH MIDDLE FINGER CREDIT 92. BIRTH MIDDLE FINGER RESPECT 93. BIRTH MIDDLE FINGER ADMIRATION 94. BIRTH MIDDLE FINGER APPRECIATION 95. BIRTH MIDDLE FINGER ESTEEM 96. BIRTH MIDDLE FINGER HONOR 97. BIRTH MIDDLE FINGER GLORY 98. BIRTH MIDDLE FINGER FAME 99. BIRTH MIDDLE FINGER CELEBRITY 100. BIRTH MIDDLE FINGER NOTORIOUSNESS	1. NAME (Last, first, middle) 2. GRADE 3. CLASS 4. SCHOOL 5. ADDRESS 6. CITY 7. STATE 8. ZIP 9. PHONE 10. FAX 11. E-MAIL 12. BIRTH DATE 13. BIRTH PLACE 14. BIRTH TIME 15. BIRTH WEIGHT 16. BIRTH HEIGHT 17. BIRTH LENGTH 18. BIRTH HEAD CIRCUMFERENCE 19. BIRTH ARM CIRCUMFERENCE 20. BIRTH LEG CIRCUMFERENCE 21. BIRTH PALMAR CIRCUMFERENCE 22. BIRTH MIDDLE FINGER CIRCUMFERENCE 23. BIRTH MIDDLE FINGER LENGTH 24. BIRTH MIDDLE FINGER BREADTH 25. BIRTH MIDDLE FINGER THICKNESS 26. BIRTH MIDDLE FINGER AREA 27. BIRTH MIDDLE FINGER PERIMETER 28. BIRTH MIDDLE FINGER VOLUME 29. BIRTH MIDDLE FINGER MASS 30. BIRTH MIDDLE FINGER DENSITY 31. BIRTH MIDDLE FINGER STRENGTH 32. BIRTH MIDDLE FINGER FLEXIBILITY 33. BIRTH MIDDLE FINGER ENDURANCE 34. BIRTH MIDDLE FINGER SPEED 35. BIRTH MIDDLE FINGER AGILITY 36. BIRTH MIDDLE FINGER COORDINATION 37. BIRTH MIDDLE FINGER BALANCE 38. BIRTH MIDDLE FINGER RHYTHM 39. BIRTH MIDDLE FINGER PATTERN 40. BIRTH MIDDLE FINGER COMPLEXITY 41. BIRTH MIDDLE FINGER ABILITY 42. BIRTH MIDDLE FINGER SKILL 43. BIRTH MIDDLE FINGER KNOWLEDGE 44. BIRTH MIDDLE FINGER WISDOM 45. BIRTH MIDDLE FINGER FAITH 46. BIRTH MIDDLE FINGER HOPE 47. BIRTH MIDDLE FINGER LOVE 48. BIRTH MIDDLE FINGER CHARITY 49. BIRTH MIDDLE FINGER PATIENCE 50. BIRTH MIDDLE FINGER KINDNESS 51. BIRTH MIDDLE FINGER GENTLENESS 52. BIRTH MIDDLE FINGER MEekNESS 53. BIRTH MIDDLE FINGER HUMILITY 54. BIRTH MIDDLE FINGER MODesty 55. BIRTH MIDDLE FINGER SELF-CONTROL 56. BIRTH MIDDLE FINGER TEMPERANCE 57. BIRTH MIDDLE FINGER SObriety 58. BIRTH MIDDLE FINGER CASTITY 59. BIRTH MIDDLE FINGER CHASTITY 60. BIRTH MIDDLE FINGER PURITY 61. BIRTH MIDDLE FINGER CLEANLINESS 62. BIRTH MIDDLE FINGER ORDER 63. BIRTH MIDDLE FINGER NEATNESS 64. BIRTH MIDDLE FINGER TIDINESS 65. BIRTH MIDDLE FINGER ORGANIZATION 66. BIRTH MIDDLE FINGER MANAGEMENT 67. BIRTH MIDDLE FINGER ADMINISTRATION
---	---	---

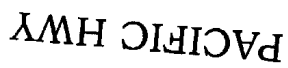
PACIFIC HWY



(GROSS FLOOR AREA FOR THIS LEVEL) = 823.84m²
(HATCHED AREA DENOTES AREAS
INCLUDED IN FSR CALS)

FSR CALCULATION DIAGRAM: UPPER GROUND FLOOR PLAN
SCALE 1:100

NOTES 1. THIS DRAWING IS A PART OF A SET OF DRAWINGS FOR THE PROPOSED DEVELOPMENT. IT IS TO BE USED IN CONJUNCTION WITH THE OTHER DRAWINGS IN THE SET. 2. THE DEVELOPER IS RESPONSIBLE FOR OBTAINING ALL NECESSARY PERMITS AND APPROVALS FROM THE RELEVANT AUTHORITIES. 3. THE DEVELOPER IS RESPONSIBLE FOR OBTAINING ALL NECESSARY SERVICES (ELECTRICITY, WATER, GAS, ETC.) AND FOR PROVIDING ALL NECESSARY UTILITY CONNECTIONS. 4. THE DEVELOPER IS RESPONSIBLE FOR OBTAINING ALL NECESSARY CONVEYANCES AND EASEMENTS. 5. THE DEVELOPER IS RESPONSIBLE FOR OBTAINING ALL NECESSARY ADJACENT PROPERTY OWNERS' CONSENTS. 6. THE DEVELOPER IS RESPONSIBLE FOR OBTAINING ALL NECESSARY ADJACENT PROPERTY OWNERS' CONSENTS. 7. THE DEVELOPER IS RESPONSIBLE FOR OBTAINING ALL NECESSARY ADJACENT PROPERTY OWNERS' CONSENTS. 8. THE DEVELOPER IS RESPONSIBLE FOR OBTAINING ALL NECESSARY ADJACENT PROPERTY OWNERS' CONSENTS. 9. THE DEVELOPER IS RESPONSIBLE FOR OBTAINING ALL NECESSARY ADJACENT PROPERTY OWNERS' CONSENTS. 10. THE DEVELOPER IS RESPONSIBLE FOR OBTAINING ALL NECESSARY ADJACENT PROPERTY OWNERS' CONSENTS.	
REVISIONS NO. DESCRIPTION 1. INITIAL DESIGN 2. REVISED DESIGN 3. REVISED DESIGN 4. REVISED DESIGN 5. REVISED DESIGN 6. REVISED DESIGN 7. REVISED DESIGN 8. REVISED DESIGN 9. REVISED DESIGN 10. REVISED DESIGN	
APPENDICES APPENDIX A: SITE PLAN APPENDIX B: FLOOR PLANS APPENDIX C: SECTIONAL ELEVATIONS APPENDIX D: EXTERIOR ELEVATIONS APPENDIX E: LANDSCAPE ARCHITECTURE APPENDIX F: CIVIL ENGINEERING APPENDIX G: ELECTRICAL ENGINEERING APPENDIX H: MECHANICAL ENGINEERING APPENDIX I: PLUMBING ENGINEERING APPENDIX J: FIRE ENGINEERING APPENDIX K: ENVIRONMENTAL ENGINEERING APPENDIX L: OTHER	
PROJECT INFORMATION PROJECT NAME: [REDACTED] PROJECT ADDRESS: [REDACTED] PROJECT CITY: [REDACTED] PROJECT STATE: [REDACTED] PROJECT ZIP: [REDACTED] PROJECT PHONE: [REDACTED] PROJECT FAX: [REDACTED] PROJECT EMAIL: [REDACTED] PROJECT WEBSITE: [REDACTED] PROJECT DATE: [REDACTED] PROJECT STATUS: [REDACTED]	
ARCHITECT NAME: [REDACTED] ADDRESS: [REDACTED] CITY: [REDACTED] STATE: [REDACTED] ZIP: [REDACTED] PHONE: [REDACTED] FAX: [REDACTED] EMAIL: [REDACTED] WEBSITE: [REDACTED] DATE: [REDACTED] STATUS: [REDACTED]	
ENGINEER NAME: [REDACTED] ADDRESS: [REDACTED] CITY: [REDACTED] STATE: [REDACTED] ZIP: [REDACTED] PHONE: [REDACTED] FAX: [REDACTED] EMAIL: [REDACTED] WEBSITE: [REDACTED] DATE: [REDACTED] STATUS: [REDACTED]	
LANDSCAPE ARCHITECT NAME: [REDACTED] ADDRESS: [REDACTED] CITY: [REDACTED] STATE: [REDACTED] ZIP: [REDACTED] PHONE: [REDACTED] FAX: [REDACTED] EMAIL: [REDACTED] WEBSITE: [REDACTED] DATE: [REDACTED] STATUS: [REDACTED]	
CIVIL ENGINEER NAME: [REDACTED] ADDRESS: [REDACTED] CITY: [REDACTED] STATE: [REDACTED] ZIP: [REDACTED] PHONE: [REDACTED] FAX: [REDACTED] EMAIL: [REDACTED] WEBSITE: [REDACTED] DATE: [REDACTED] STATUS: [REDACTED]	
ELECTRICAL ENGINEER NAME: [REDACTED] ADDRESS: [REDACTED] CITY: [REDACTED] STATE: [REDACTED] ZIP: [REDACTED] PHONE: [REDACTED] FAX: [REDACTED] EMAIL: [REDACTED] WEBSITE: [REDACTED] DATE: [REDACTED] STATUS: [REDACTED]	
MECHANICAL ENGINEER NAME: [REDACTED] ADDRESS: [REDACTED] CITY: [REDACTED] STATE: [REDACTED] ZIP: [REDACTED] PHONE: [REDACTED] FAX: [REDACTED] EMAIL: [REDACTED] WEBSITE: [REDACTED] DATE: [REDACTED] STATUS: [REDACTED]	
PLUMBING ENGINEER NAME: [REDACTED] ADDRESS: [REDACTED] CITY: [REDACTED] STATE: [REDACTED] ZIP: [REDACTED] PHONE: [REDACTED] FAX: [REDACTED] EMAIL: [REDACTED] WEBSITE: [REDACTED] DATE: [REDACTED] STATUS: [REDACTED]	
FIRE ENGINEER NAME: [REDACTED] ADDRESS: [REDACTED] CITY: [REDACTED] STATE: [REDACTED] ZIP: [REDACTED] PHONE: [REDACTED] FAX: [REDACTED] EMAIL: [REDACTED] WEBSITE: [REDACTED] DATE: [REDACTED] STATUS: [REDACTED]	
ENVIRONMENTAL ENGINEER NAME: [REDACTED] ADDRESS: [REDACTED] CITY: [REDACTED] STATE: [REDACTED] ZIP: [REDACTED] PHONE: [REDACTED] FAX: [REDACTED] EMAIL: [REDACTED] WEBSITE: [REDACTED] DATE: [REDACTED] STATUS: [REDACTED]	
OTHER NAME: [REDACTED] ADDRESS: [REDACTED] CITY: [REDACTED] STATE: [REDACTED] ZIP: [REDACTED] PHONE: [REDACTED] FAX: [REDACTED] EMAIL: [REDACTED] WEBSITE: [REDACTED] DATE: [REDACTED] STATUS: [REDACTED]	



CARPARK BASEMENT LEVEL 1 / LOWER GROUND FLOOR PLAN
SCALE 1:100

<p>BASE REQUIREMENTS</p> <p>1. The contractor shall provide all materials, labor, and equipment necessary for the completion of the work.</p> <p>2. The contractor shall be responsible for obtaining all necessary permits and licenses.</p> <p>3. The contractor shall maintain a clean and safe work area at all times.</p> <p>4. The contractor shall provide a detailed schedule of work and progress.</p> <p>5. The contractor shall provide a detailed list of subcontractors and their qualifications.</p> <p>6. The contractor shall provide a detailed list of materials and their quantities.</p> <p>7. The contractor shall provide a detailed list of equipment and their quantities.</p> <p>8. The contractor shall provide a detailed list of labor and their quantities.</p> <p>9. The contractor shall provide a detailed list of other resources and their quantities.</p> <p>10. The contractor shall provide a detailed list of other requirements and their quantities.</p>	<p>MA INSTRUCTIONS</p> <p>1. The contractor shall follow the instructions of the MA at all times.</p> <p>2. The contractor shall follow the instructions of the MA at all times.</p> <p>3. The contractor shall follow the instructions of the MA at all times.</p> <p>4. The contractor shall follow the instructions of the MA at all times.</p> <p>5. The contractor shall follow the instructions of the MA at all times.</p> <p>6. The contractor shall follow the instructions of the MA at all times.</p> <p>7. The contractor shall follow the instructions of the MA at all times.</p> <p>8. The contractor shall follow the instructions of the MA at all times.</p> <p>9. The contractor shall follow the instructions of the MA at all times.</p> <p>10. The contractor shall follow the instructions of the MA at all times.</p>	<p>GENERAL NOTE</p> <p>1. The contractor shall follow the instructions of the MA at all times.</p> <p>2. The contractor shall follow the instructions of the MA at all times.</p> <p>3. The contractor shall follow the instructions of the MA at all times.</p> <p>4. The contractor shall follow the instructions of the MA at all times.</p> <p>5. The contractor shall follow the instructions of the MA at all times.</p> <p>6. The contractor shall follow the instructions of the MA at all times.</p> <p>7. The contractor shall follow the instructions of the MA at all times.</p> <p>8. The contractor shall follow the instructions of the MA at all times.</p> <p>9. The contractor shall follow the instructions of the MA at all times.</p> <p>10. The contractor shall follow the instructions of the MA at all times.</p>
---	--	---

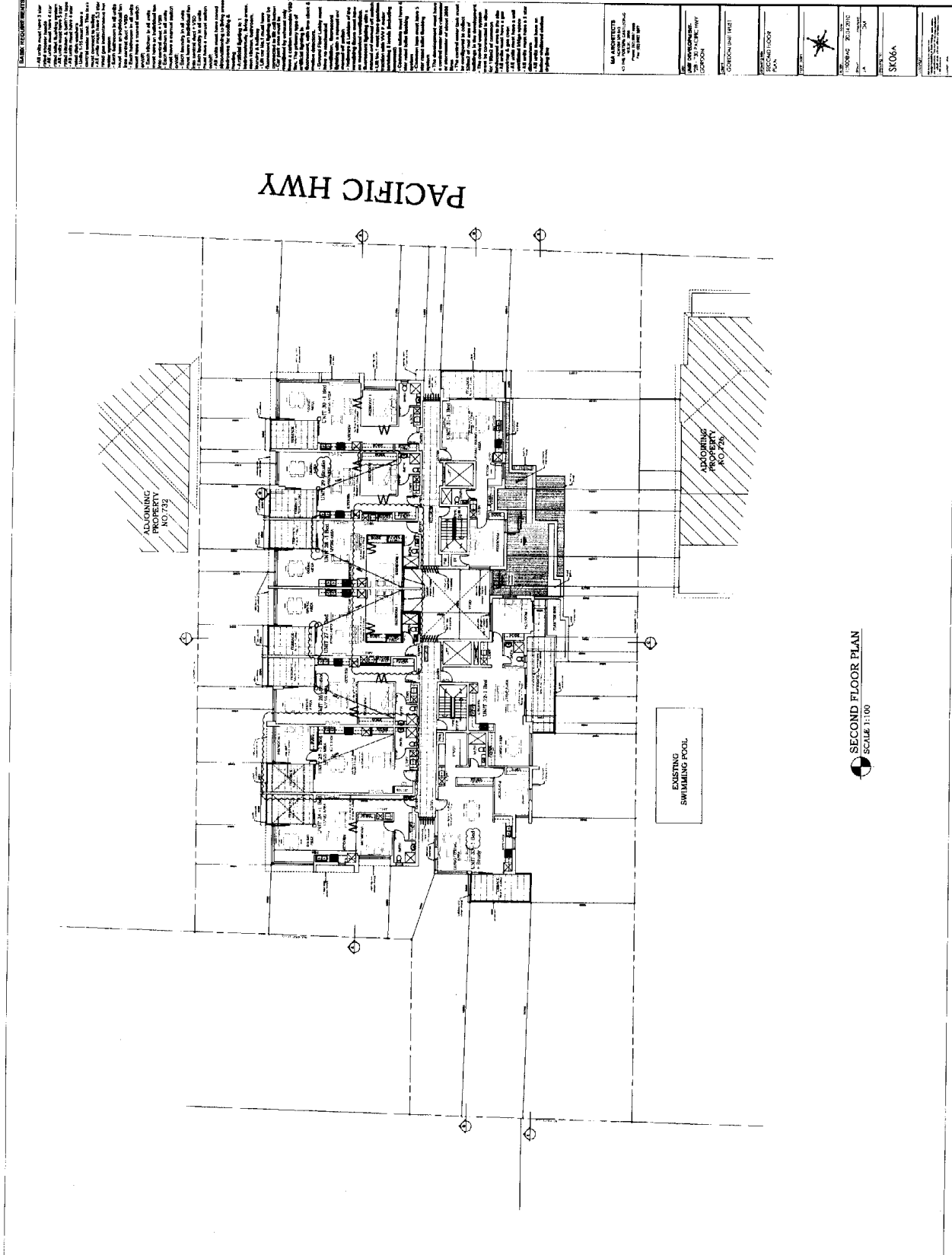
Unit 2 is now called a standard. All baby rail-on slides re-
commended near store are
in baby.

Carriage return released
releasing subject between
parent and street footage.
Visitor spot was removed
as seems already 1. Visitor
shown over from the midday
equipment.

Effect of unit 3
re-designed to be a
statement that from a subline

REVISIONS

NO.	DATE	DESCRIPTION
1	10/10/00	Initial Design
2	11/10/00	Revised Design
3	12/10/00	Final Design



SECOND FLOOR PLAN
SCALE 1:100

SK06

ARCHITECTS
CHAS. H. HARRIS & ASSOCIATES
1000 PACIFIC HWY
SUITE 200
SAN ANTONIO, TEXAS 78204
TEL: 512/345-1234
FAX: 512/345-5678

ENGINEER
J. L. HARRIS
1000 PACIFIC HWY
SUITE 200
SAN ANTONIO, TEXAS 78204
TEL: 512/345-1234
FAX: 512/345-5678

CONTRACTOR
J. L. HARRIS
1000 PACIFIC HWY
SUITE 200
SAN ANTONIO, TEXAS 78204
TEL: 512/345-1234
FAX: 512/345-5678

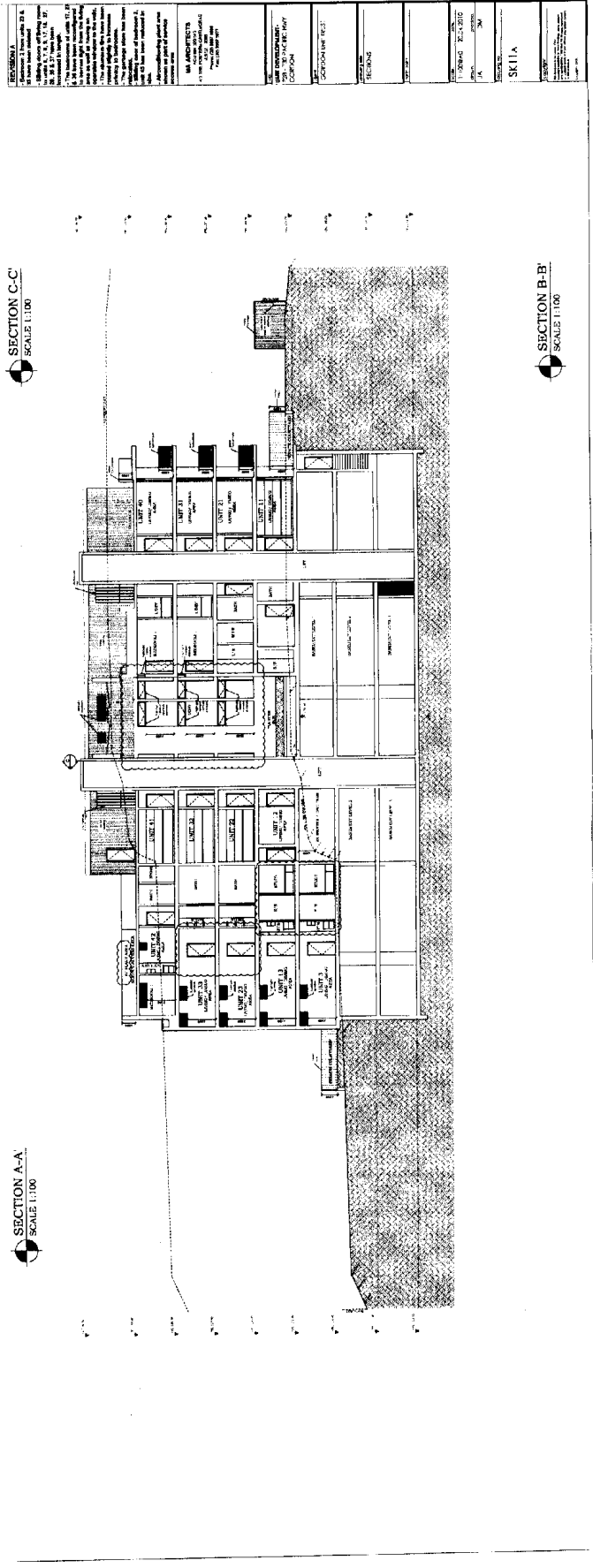
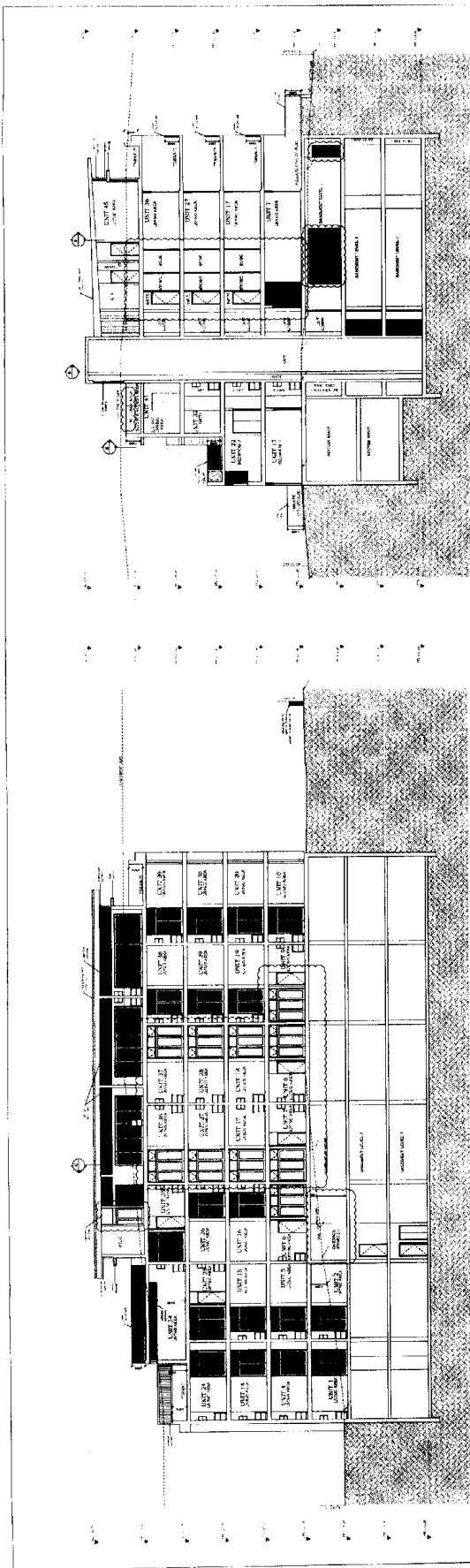
PLUMBER
J. L. HARRIS
1000 PACIFIC HWY
SUITE 200
SAN ANTONIO, TEXAS 78204
TEL: 512/345-1234
FAX: 512/345-5678

ELECTRICIAN
J. L. HARRIS
1000 PACIFIC HWY
SUITE 200
SAN ANTONIO, TEXAS 78204
TEL: 512/345-1234
FAX: 512/345-5678

MECHANICAL
J. L. HARRIS
1000 PACIFIC HWY
SUITE 200
SAN ANTONIO, TEXAS 78204
TEL: 512/345-1234
FAX: 512/345-5678

PAINTER
J. L. HARRIS
1000 PACIFIC HWY
SUITE 200
SAN ANTONIO, TEXAS 78204
TEL: 512/345-1234
FAX: 512/345-5678

ROOFER
J. L. HARRIS
1000 PACIFIC HWY
SUITE 200
SAN ANTONIO, TEXAS 78204
TEL: 512/345-1234
FAX: 512/345-5678



<p>SECTION A</p> <p>1. Section A-A is a vertical section through the building, showing the internal structure and layout of the units and common areas.</p> <p>2. The section is drawn at a scale of 1:100.</p> <p>3. The drawing shows the following rooms and areas:</p> <ul style="list-style-type: none"> Unit 1.1 Unit 1.2 Unit 1.3 Unit 1.4 Unit 1.5 Unit 1.6 Unit 1.7 Unit 1.8 Unit 1.9 Unit 1.10 Unit 1.11 Unit 1.12 Unit 1.13 Unit 1.14 Unit 1.15 Unit 1.16 Unit 1.17 Unit 1.18 Unit 1.19 Unit 1.20 Unit 1.21 Unit 1.22 Unit 1.23 Unit 1.24 Unit 1.25 Unit 1.26 Unit 1.27 Unit 1.28 Unit 1.29 Unit 1.30 Unit 1.31 Unit 1.32 Unit 1.33 Unit 1.34 Unit 1.35 Unit 1.36 Unit 1.37 Unit 1.38 Unit 1.39 Unit 1.40 Unit 1.41 Unit 1.42 Unit 1.43 Unit 1.44 Unit 1.45 Unit 1.46 Unit 1.47 Unit 1.48 Unit 1.49 Unit 1.50 Unit 1.51 Unit 1.52 Unit 1.53 Unit 1.54 Unit 1.55 Unit 1.56 Unit 1.57 Unit 1.58 Unit 1.59 Unit 1.60 Unit 1.61 Unit 1.62 Unit 1.63 Unit 1.64 Unit 1.65 Unit 1.66 Unit 1.67 Unit 1.68 Unit 1.69 Unit 1.70 Unit 1.71 Unit 1.72 Unit 1.73 Unit 1.74 Unit 1.75 Unit 1.76 Unit 1.77 Unit 1.78 Unit 1.79 Unit 1.80 Unit 1.81 Unit 1.82 Unit 1.83 Unit 1.84 Unit 1.85 Unit 1.86 Unit 1.87 Unit 1.88 Unit 1.89 Unit 1.90 Unit 1.91 Unit 1.92 Unit 1.93 Unit 1.94 Unit 1.95 Unit 1.96 Unit 1.97 Unit 1.98 Unit 1.99 Unit 1.100 	<p>SECTION B</p> <p>1. Section B-B is a vertical section through the building, showing the internal structure and layout of the units and common areas.</p> <p>2. The section is drawn at a scale of 1:100.</p> <p>3. The drawing shows the following rooms and areas:</p> <ul style="list-style-type: none"> Unit 2.1 Unit 2.2 Unit 2.3 Unit 2.4 Unit 2.5 Unit 2.6 Unit 2.7 Unit 2.8 Unit 2.9 Unit 2.10 Unit 2.11 Unit 2.12 Unit 2.13 Unit 2.14 Unit 2.15 Unit 2.16 Unit 2.17 Unit 2.18 Unit 2.19 Unit 2.20 Unit 2.21 Unit 2.22 Unit 2.23 Unit 2.24 Unit 2.25 Unit 2.26 Unit 2.27 Unit 2.28 Unit 2.29 Unit 2.30 Unit 2.31 Unit 2.32 Unit 2.33 Unit 2.34 Unit 2.35 Unit 2.36 Unit 2.37 Unit 2.38 Unit 2.39 Unit 2.40 Unit 2.41 Unit 2.42 Unit 2.43 Unit 2.44 Unit 2.45 Unit 2.46 Unit 2.47 Unit 2.48 Unit 2.49 Unit 2.50 Unit 2.51 Unit 2.52 Unit 2.53 Unit 2.54 Unit 2.55 Unit 2.56 Unit 2.57 Unit 2.58 Unit 2.59 Unit 2.60 Unit 2.61 Unit 2.62 Unit 2.63 Unit 2.64 Unit 2.65 Unit 2.66 Unit 2.67 Unit 2.68 Unit 2.69 Unit 2.70 Unit 2.71 Unit 2.72 Unit 2.73 Unit 2.74 Unit 2.75 Unit 2.76 Unit 2.77 Unit 2.78 Unit 2.79 Unit 2.80 Unit 2.81 Unit 2.82 Unit 2.83 Unit 2.84 Unit 2.85 Unit 2.86 Unit 2.87 Unit 2.88 Unit 2.89 Unit 2.90 Unit 2.91 Unit 2.92 Unit 2.93 Unit 2.94 Unit 2.95 Unit 2.96 Unit 2.97 Unit 2.98 Unit 2.99 Unit 2.100 	<p>SECTION C</p> <p>1. Section C-C is a vertical section through the building, showing the internal structure and layout of the units and common areas.</p> <p>2. The section is drawn at a scale of 1:100.</p> <p>3. The drawing shows the following rooms and areas:</p> <ul style="list-style-type: none"> Unit 3.1 Unit 3.2 Unit 3.3 Unit 3.4 Unit 3.5 Unit 3.6 Unit 3.7 Unit 3.8 Unit 3.9 Unit 3.10 Unit 3.11 Unit 3.12 Unit 3.13 Unit 3.14 Unit 3.15 Unit 3.16 Unit 3.17 Unit 3.18 Unit 3.19 Unit 3.20 Unit 3.21 Unit 3.22 Unit 3.23 Unit 3.24 Unit 3.25 Unit 3.26 Unit 3.27 Unit 3.28 Unit 3.29 Unit 3.30 Unit 3.31 Unit 3.32 Unit 3.33 Unit 3.34 Unit 3.35 Unit 3.36 Unit 3.37 Unit 3.38 Unit 3.39 Unit 3.40 Unit 3.41 Unit 3.42 Unit 3.43 Unit 3.44 Unit 3.45 Unit 3.46 Unit 3.47 Unit 3.48 Unit 3.49 Unit 3.50 Unit 3.51 Unit 3.52 Unit 3.53 Unit 3.54 Unit 3.55 Unit 3.56 Unit 3.57 Unit 3.58 Unit 3.59 Unit 3.60 Unit 3.61 Unit 3.62 Unit 3.63 Unit 3.64 Unit 3.65 Unit 3.66 Unit 3.67 Unit 3.68 Unit 3.69 Unit 3.70 Unit 3.71 Unit 3.72 Unit 3.73 Unit 3.74 Unit 3.75 Unit 3.76 Unit 3.77 Unit 3.78 Unit 3.79 Unit 3.80 Unit 3.81 Unit 3.82 Unit 3.83 Unit 3.84 Unit 3.85 Unit 3.86 Unit 3.87 Unit 3.88 Unit 3.89 Unit 3.90 Unit 3.91 Unit 3.92 Unit 3.93 Unit 3.94 Unit 3.95 Unit 3.96 Unit 3.97 Unit 3.98 Unit 3.99 Unit 3.100 	<p>SECTION D</p> <p>1. Section D-D is a vertical section through the building, showing the internal structure and layout of the units and common areas.</p> <p>2. The section is drawn at a scale of 1:100.</p> <p>3. The drawing shows the following rooms and areas:</p> <ul style="list-style-type: none"> Unit 4.1 Unit 4.2 Unit 4.3 Unit 4.4 Unit 4.5 Unit 4.6 Unit 4.7 Unit 4.8 Unit 4.9 Unit 4.10 Unit 4.11 Unit 4.12 Unit 4.13 Unit 4.14 Unit 4.15 Unit 4.16 Unit 4.17 Unit 4.18 Unit 4.19 Unit 4.20 Unit 4.21 Unit 4.22 Unit 4.23 Unit 4.24 Unit 4.25 Unit 4.26 Unit 4.27 Unit 4.28 Unit 4.29 Unit 4.30 Unit 4.31 Unit 4.32 Unit 4.33 Unit 4.34 Unit 4.35 Unit 4.36 Unit 4.37 Unit 4.38 Unit 4.39 Unit 4.40 Unit 4.41 Unit 4.42 Unit 4.43 Unit 4.44 Unit 4.45 Unit 4.46 Unit 4.47 Unit 4.48 Unit 4.49 Unit 4.50 Unit 4.51 Unit 4.52 Unit 4.53 Unit 4.54 Unit 4.55 Unit 4.56 Unit 4.57 Unit 4.58 Unit 4.59 Unit 4.60 Unit 4.61 Unit 4.62 Unit 4.63 Unit 4.64 Unit 4.65 Unit 4.66 Unit 4.67 Unit 4.68 Unit 4.69 Unit 4.70 Unit 4.71 Unit 4.72 Unit 4.73 Unit 4.74 Unit 4.75 Unit 4.76 Unit 4.77 Unit 4.78 Unit 4.79 Unit 4.80 Unit 4.81 Unit 4.82 Unit 4.83 Unit 4.84 Unit 4.85 Unit 4.86 Unit 4.87 Unit 4.88 Unit 4.89 Unit 4.90 Unit 4.91 Unit 4.92 Unit 4.93 Unit 4.94 Unit 4.95 Unit 4.96 Unit 4.97 Unit 4.98 Unit 4.99 Unit 4.100
--	--	--	--

HEIGHT SCHEDULE OF EXISTING TREES

TREE 1	6 METERS HIGH
TREE 2	8 METERS HIGH
TREE 3	11 METERS HIGH
TREE 4	11 METERS HIGH
TREE 5	15 METERS HIGH
TREE 6	11 METERS HIGH
TREE 7	11 METERS HIGH
TREE 8	11 METERS HIGH
TREE 9	11 METERS HIGH
TREE 10	11 METERS HIGH
TREE 11	11 METERS HIGH
TREE 12	11 METERS HIGH
TREE 13	11 METERS HIGH
TREE 14	11 METERS HIGH
TREE 15	11 METERS HIGH
TREE 16	11 METERS HIGH
TREE 17	11 METERS HIGH
TREE 18	11 METERS HIGH
TREE 19	11 METERS HIGH
TREE 20	11 METERS HIGH
TREE 21	11 METERS HIGH
TREE 22	11 METERS HIGH
TREE 23	11 METERS HIGH
TREE 24	11 METERS HIGH
TREE 25	11 METERS HIGH
TREE 26	11 METERS HIGH
TREE 27	11 METERS HIGH
TREE 28	11 METERS HIGH
TREE 29	11 METERS HIGH
TREE 30	11 METERS HIGH
TREE 31	11 METERS HIGH
TREE 32	11 METERS HIGH
TREE 33	11 METERS HIGH
TREE 34	11 METERS HIGH
TREE 35	11 METERS HIGH

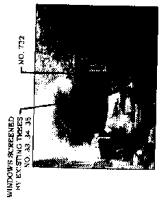


PHOTO 1

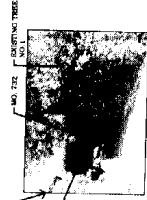


PHOTO 2



PHOTO 3

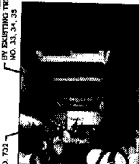


PHOTO 4

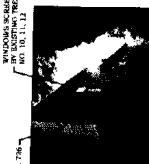
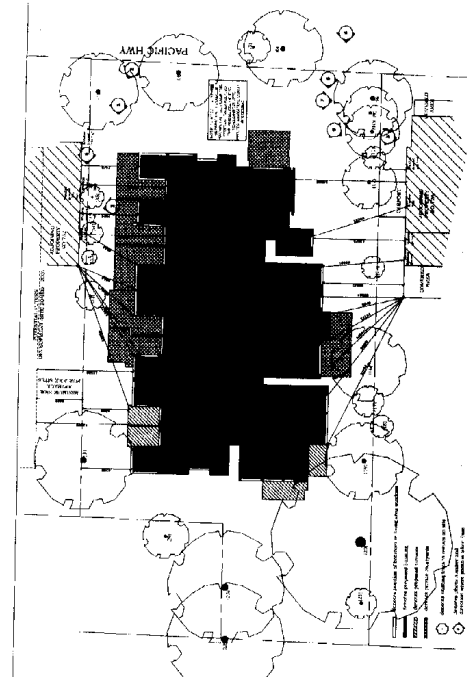
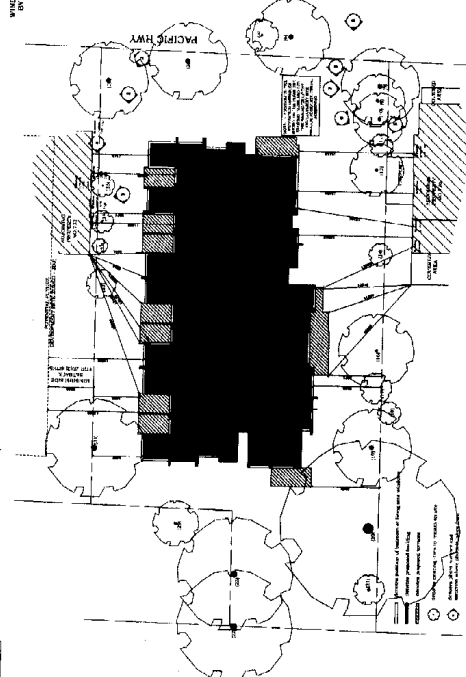


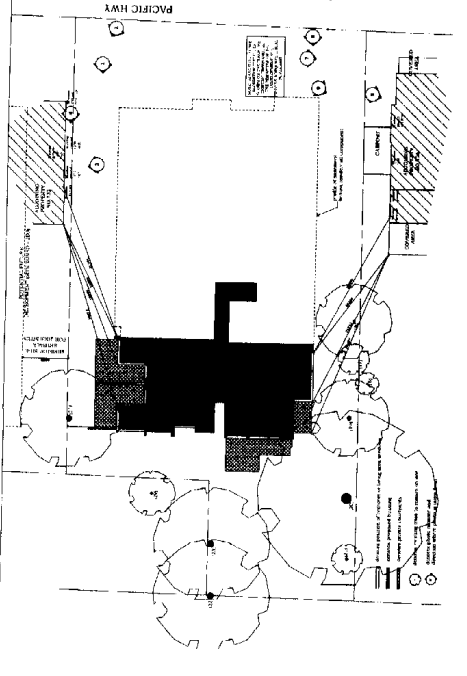
PHOTO 5



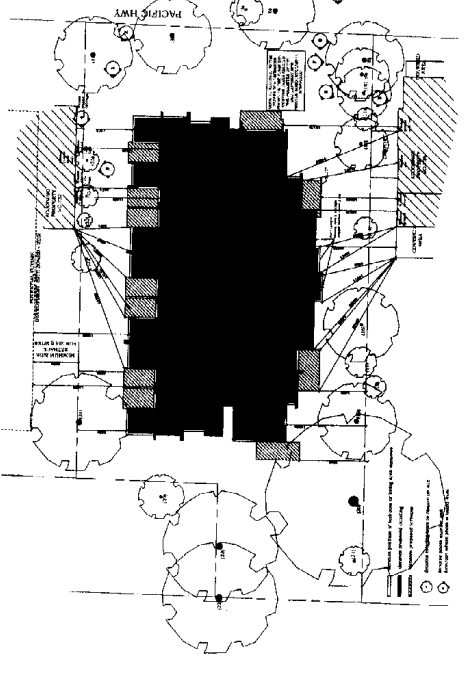
UPPER GROUND FLOOR PLAN
SCALE 1:200



SECOND FLOOR PLAN
SCALE 1:200



LOWER GROUND FLOOR PLAN
SCALE 1:200



FIRST FLOOR PLAN
SCALE 1:200



PHOTO 6



PHOTO 7

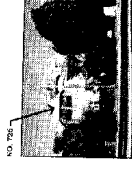


PHOTO 8

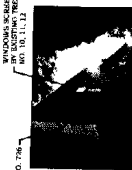


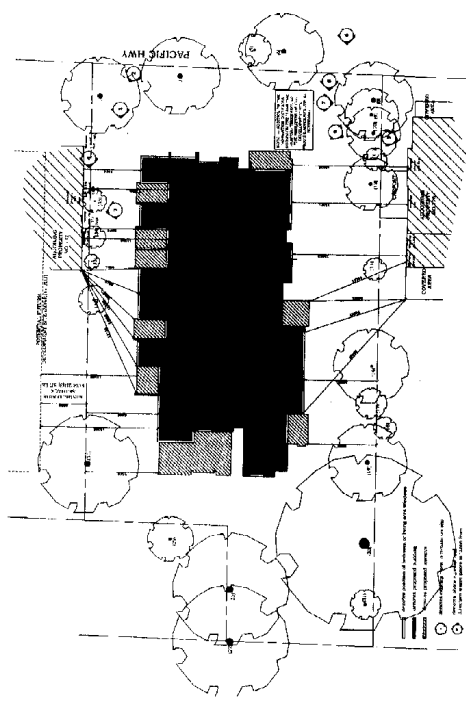
PHOTO 9

NO. 722	11 METERS HIGH
NO. 723	11 METERS HIGH
NO. 724	11 METERS HIGH
NO. 725	11 METERS HIGH
NO. 726	11 METERS HIGH
NO. 727	11 METERS HIGH
NO. 728	11 METERS HIGH
NO. 729	11 METERS HIGH
NO. 730	11 METERS HIGH
NO. 731	11 METERS HIGH
NO. 732	11 METERS HIGH
NO. 733	11 METERS HIGH
NO. 734	11 METERS HIGH
NO. 735	11 METERS HIGH
NO. 736	11 METERS HIGH
NO. 737	11 METERS HIGH
NO. 738	11 METERS HIGH
NO. 739	11 METERS HIGH
NO. 740	11 METERS HIGH
NO. 741	11 METERS HIGH
NO. 742	11 METERS HIGH
NO. 743	11 METERS HIGH
NO. 744	11 METERS HIGH
NO. 745	11 METERS HIGH
NO. 746	11 METERS HIGH
NO. 747	11 METERS HIGH
NO. 748	11 METERS HIGH
NO. 749	11 METERS HIGH
NO. 750	11 METERS HIGH

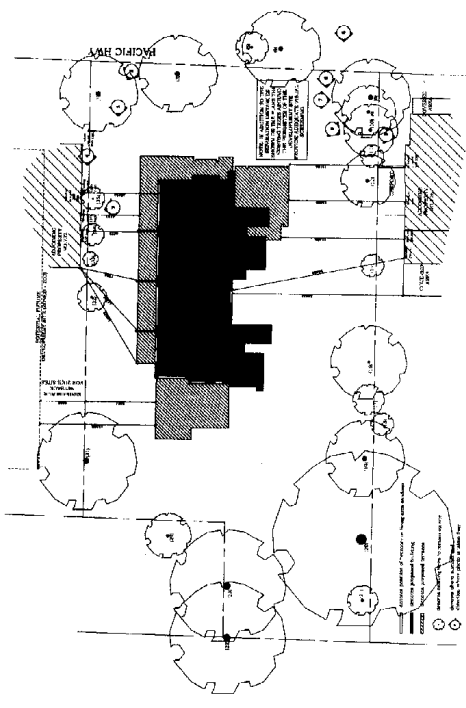
NOTE: IN ADDITION TO THESE EXISTING TREES THE LANDSCAPE ARCHITECT HAS PROVIDED ADDITIONAL SCREEN PLANTING ALONG THE TWO SIDE BOUNDARIES

HEIGHT SCHEDULE OF EXISTING TREES

TREE 1	8 METERS HIGH
TREE 2	8 METERS HIGH
TREE 3	8 METERS HIGH
TREE 4	8 METERS HIGH
TREE 5	8 METERS HIGH
TREE 6	8 METERS HIGH
TREE 7	8 METERS HIGH
TREE 8	8 METERS HIGH
TREE 9	8 METERS HIGH
TREE 10	8 METERS HIGH
TREE 11	8 METERS HIGH
TREE 12	8 METERS HIGH
TREE 13	8 METERS HIGH
TREE 14	8 METERS HIGH
TREE 15	8 METERS HIGH
TREE 16	8 METERS HIGH
TREE 17	8 METERS HIGH
TREE 18	8 METERS HIGH
TREE 19	8 METERS HIGH
TREE 20	8 METERS HIGH
TREE 21	8 METERS HIGH
TREE 22	8 METERS HIGH
TREE 23	8 METERS HIGH
TREE 24	8 METERS HIGH
TREE 25	8 METERS HIGH
TREE 26	8 METERS HIGH
TREE 27	8 METERS HIGH
TREE 28	8 METERS HIGH
TREE 29	8 METERS HIGH
TREE 30	8 METERS HIGH
TREE 31	8 METERS HIGH
TREE 32	8 METERS HIGH
TREE 33	8 METERS HIGH
TREE 34	8 METERS HIGH
TREE 35	8 METERS HIGH
TREE 36	8 METERS HIGH
TREE 37	8 METERS HIGH
TREE 38	8 METERS HIGH
TREE 39	8 METERS HIGH
TREE 40	8 METERS HIGH
TREE 41	8 METERS HIGH
TREE 42	8 METERS HIGH
TREE 43	8 METERS HIGH
TREE 44	8 METERS HIGH
TREE 45	8 METERS HIGH
TREE 46	8 METERS HIGH
TREE 47	8 METERS HIGH
TREE 48	8 METERS HIGH
TREE 49	8 METERS HIGH
TREE 50	8 METERS HIGH
TREE 51	8 METERS HIGH
TREE 52	8 METERS HIGH
TREE 53	8 METERS HIGH
TREE 54	8 METERS HIGH
TREE 55	8 METERS HIGH
TREE 56	8 METERS HIGH
TREE 57	8 METERS HIGH
TREE 58	8 METERS HIGH
TREE 59	8 METERS HIGH
TREE 60	8 METERS HIGH
TREE 61	8 METERS HIGH
TREE 62	8 METERS HIGH
TREE 63	8 METERS HIGH
TREE 64	8 METERS HIGH
TREE 65	8 METERS HIGH
TREE 66	8 METERS HIGH
TREE 67	8 METERS HIGH
TREE 68	8 METERS HIGH
TREE 69	8 METERS HIGH
TREE 70	8 METERS HIGH
TREE 71	8 METERS HIGH
TREE 72	8 METERS HIGH
TREE 73	8 METERS HIGH
TREE 74	8 METERS HIGH
TREE 75	8 METERS HIGH
TREE 76	8 METERS HIGH
TREE 77	8 METERS HIGH
TREE 78	8 METERS HIGH
TREE 79	8 METERS HIGH
TREE 80	8 METERS HIGH
TREE 81	8 METERS HIGH
TREE 82	8 METERS HIGH
TREE 83	8 METERS HIGH
TREE 84	8 METERS HIGH
TREE 85	8 METERS HIGH
TREE 86	8 METERS HIGH
TREE 87	8 METERS HIGH
TREE 88	8 METERS HIGH
TREE 89	8 METERS HIGH
TREE 90	8 METERS HIGH
TREE 91	8 METERS HIGH
TREE 92	8 METERS HIGH
TREE 93	8 METERS HIGH
TREE 94	8 METERS HIGH
TREE 95	8 METERS HIGH
TREE 96	8 METERS HIGH
TREE 97	8 METERS HIGH
TREE 98	8 METERS HIGH
TREE 99	8 METERS HIGH
TREE 100	8 METERS HIGH

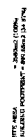


THIRD FLOOR PLAN
SCALE 1:200

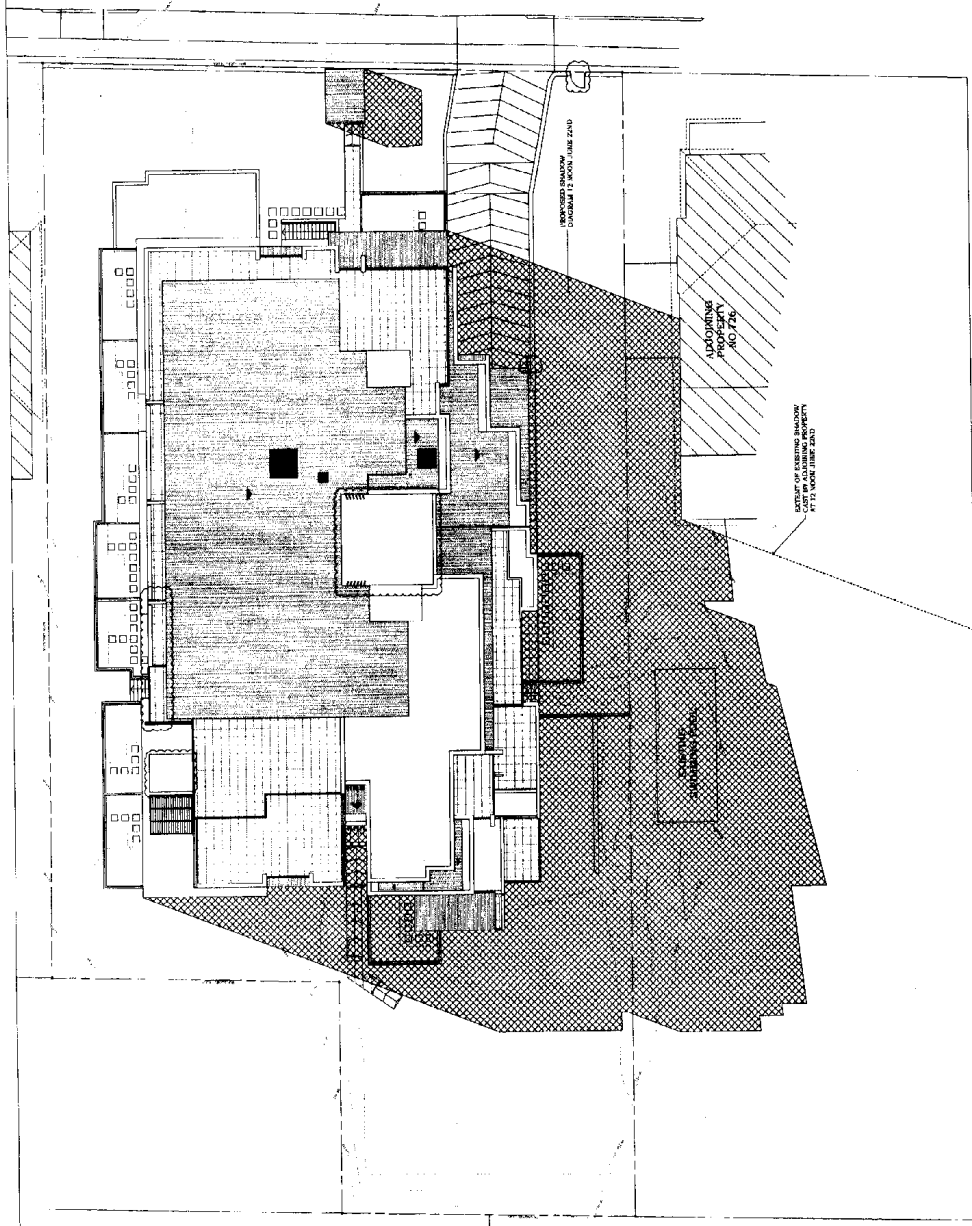


PENTHOUSE FLOOR PLAN
SCALE 1:200

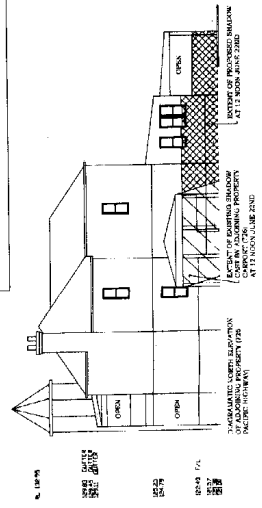
ALL DIMENSIONS IN METERS UNLESS OTHERWISE NOTED DRAWN BY: [Signature] DATE: 10/10/01	THE DEVELOPER [Name] [Address] [City]	THE ARCHITECT [Name] [Address] [City]	THE ENGINEER [Name] [Address] [City]	THE LANDSCAPE ARCHITECT [Name] [Address] [City]	THE CIVIL ENGINEER [Name] [Address] [City]	THE ELECTRICAL ENGINEER [Name] [Address] [City]	THE MECHANICAL ENGINEER [Name] [Address] [City]	THE STRUCTURAL ENGINEER [Name] [Address] [City]	THE ENVIRONMENTAL ENGINEER [Name] [Address] [City]	THE GEOTECHNICAL ENGINEER [Name] [Address] [City]	THE TRANSPORTATION ENGINEER [Name] [Address] [City]	THE AERONAUTICAL ENGINEER [Name] [Address] [City]	THE AGRICULTURAL ENGINEER [Name] [Address] [City]	THE CHEMICAL ENGINEER [Name] [Address] [City]	THE CIVIL ENGINEER [Name] [Address] [City]	THE ELECTRICAL ENGINEER [Name] [Address] [City]	THE MECHANICAL ENGINEER [Name] [Address] [City]	THE STRUCTURAL ENGINEER [Name] [Address] [City]	THE ENVIRONMENTAL ENGINEER [Name] [Address] [City]	THE GEOTECHNICAL ENGINEER [Name] [Address] [City]	THE TRANSPORTATION ENGINEER [Name] [Address] [City]	THE AERONAUTICAL ENGINEER [Name] [Address] [City]	THE AGRICULTURAL ENGINEER [Name] [Address] [City]	THE CHEMICAL ENGINEER [Name] [Address] [City]
--	--	--	---	--	---	--	--	--	---	--	--	--	--	--	---	--	--	--	---	--	--	--	--	--

[illegible]

PACIFIC HWY

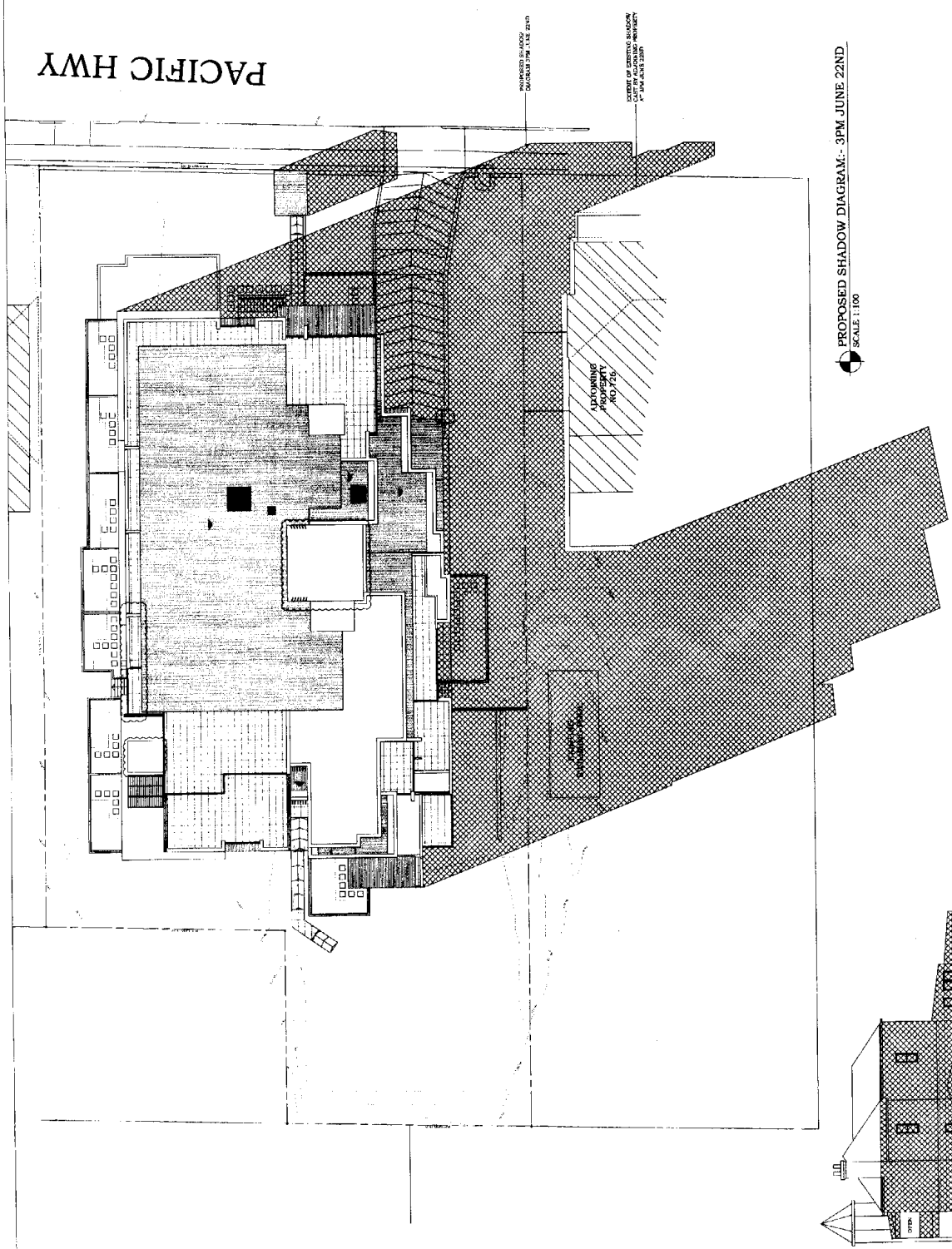


PROPOSED SHADOW DIAGRAM - 12 NOON JUNE 22ND
SCALE 1:100



PROPOSED ELEVATIONAL SHADOW DIAGRAM - 12 NOON JUNE 22ND
SCALE 1:100

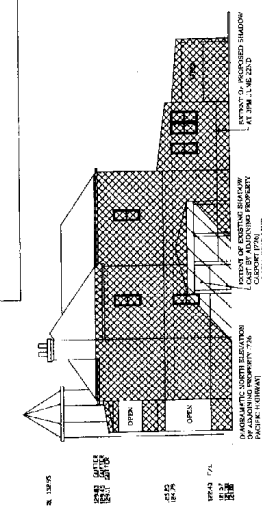
<p>REVISIONS</p> <p>1. 12/15/19</p> <p>2. 12/15/19</p> <p>3. 12/15/19</p> <p>4. 12/15/19</p> <p>5. 12/15/19</p> <p>6. 12/15/19</p> <p>7. 12/15/19</p> <p>8. 12/15/19</p> <p>9. 12/15/19</p> <p>10. 12/15/19</p> <p>11. 12/15/19</p> <p>12. 12/15/19</p> <p>13. 12/15/19</p> <p>14. 12/15/19</p> <p>15. 12/15/19</p> <p>16. 12/15/19</p> <p>17. 12/15/19</p> <p>18. 12/15/19</p> <p>19. 12/15/19</p> <p>20. 12/15/19</p> <p>21. 12/15/19</p> <p>22. 12/15/19</p> <p>23. 12/15/19</p> <p>24. 12/15/19</p> <p>25. 12/15/19</p> <p>26. 12/15/19</p> <p>27. 12/15/19</p> <p>28. 12/15/19</p> <p>29. 12/15/19</p> <p>30. 12/15/19</p> <p>31. 12/15/19</p> <p>32. 12/15/19</p> <p>33. 12/15/19</p> <p>34. 12/15/19</p> <p>35. 12/15/19</p> <p>36. 12/15/19</p> <p>37. 12/15/19</p> <p>38. 12/15/19</p> <p>39. 12/15/19</p> <p>40. 12/15/19</p> <p>41. 12/15/19</p> <p>42. 12/15/19</p> <p>43. 12/15/19</p> <p>44. 12/15/19</p> <p>45. 12/15/19</p> <p>46. 12/15/19</p> <p>47. 12/15/19</p> <p>48. 12/15/19</p> <p>49. 12/15/19</p> <p>50. 12/15/19</p> <p>51. 12/15/19</p> <p>52. 12/15/19</p> <p>53. 12/15/19</p> <p>54. 12/15/19</p> <p>55. 12/15/19</p> <p>56. 12/15/19</p> <p>57. 12/15/19</p> <p>58. 12/15/19</p> <p>59. 12/15/19</p> <p>60. 12/15/19</p> <p>61. 12/15/19</p> <p>62. 12/15/19</p> <p>63. 12/15/19</p> <p>64. 12/15/19</p> <p>65. 12/15/19</p> <p>66. 12/15/19</p> <p>67. 12/15/19</p> <p>68. 12/15/19</p> <p>69. 12/15/19</p> <p>70. 12/15/19</p> <p>71. 12/15/19</p> <p>72. 12/15/19</p> <p>73. 12/15/19</p> <p>74. 12/15/19</p> <p>75. 12/15/19</p> <p>76. 12/15/19</p> <p>77. 12/15/19</p> <p>78. 12/15/19</p> <p>79. 12/15/19</p> <p>80. 12/15/19</p> <p>81. 12/15/19</p> <p>82. 12/15/19</p> <p>83. 12/15/19</p> <p>84. 12/15/19</p> <p>85. 12/15/19</p> <p>86. 12/15/19</p> <p>87. 12/15/19</p> <p>88. 12/15/19</p> <p>89. 12/15/19</p> <p>90. 12/15/19</p> <p>91. 12/15/19</p> <p>92. 12/15/19</p> <p>93. 12/15/19</p> <p>94. 12/15/19</p> <p>95. 12/15/19</p> <p>96. 12/15/19</p> <p>97. 12/15/19</p> <p>98. 12/15/19</p> <p>99. 12/15/19</p> <p>100. 12/15/19</p>	<p>PROJECT INFORMATION</p> <p>PROJECT NAME: [REDACTED]</p> <p>PROJECT ADDRESS: [REDACTED]</p> <p>PROJECT CITY: [REDACTED]</p> <p>PROJECT STATE: [REDACTED]</p> <p>PROJECT ZIP: [REDACTED]</p> <p>PROJECT PHONE: [REDACTED]</p> <p>PROJECT FAX: [REDACTED]</p> <p>PROJECT EMAIL: [REDACTED]</p> <p>PROJECT WEBSITE: [REDACTED]</p> <p>PROJECT DESCRIPTION: [REDACTED]</p> <p>PROJECT OWNER: [REDACTED]</p> <p>PROJECT ARCHITECT: [REDACTED]</p> <p>PROJECT ENGINEER: [REDACTED]</p> <p>PROJECT LANDSCAPE ARCHITECT: [REDACTED]</p> <p>PROJECT INTERIOR DESIGNER: [REDACTED]</p> <p>PROJECT SPECIALIST: [REDACTED]</p> <p>PROJECT CONSULTANT: [REDACTED]</p> <p>PROJECT DATE: [REDACTED]</p> <p>PROJECT SCALE: [REDACTED]</p> <p>PROJECT SHEET: [REDACTED]</p> <p>PROJECT TOTAL SHEETS: [REDACTED]</p> <p>PROJECT STATUS: [REDACTED]</p> <p>PROJECT NOTES: [REDACTED]</p> <p>PROJECT COMMENTS: [REDACTED]</p> <p>PROJECT REVISIONS: [REDACTED]</p> <p>PROJECT APPROVALS: [REDACTED]</p> <p>PROJECT SIGNATURES: [REDACTED]</p> <p>PROJECT STAMPS: [REDACTED]</p> <p>PROJECT LOGO: [REDACTED]</p> <p>PROJECT CONTACT: [REDACTED]</p> <p>PROJECT OFFICE: [REDACTED]</p> <p>PROJECT PHONE: [REDACTED]</p> <p>PROJECT FAX: [REDACTED]</p> <p>PROJECT EMAIL: [REDACTED]</p> <p>PROJECT WEBSITE: [REDACTED]</p> <p>PROJECT ADDRESS: [REDACTED]</p> <p>PROJECT CITY: [REDACTED]</p> <p>PROJECT STATE: [REDACTED]</p> <p>PROJECT ZIP: [REDACTED]</p> <p>PROJECT PHONE: [REDACTED]</p> <p>PROJECT FAX: [REDACTED]</p> <p>PROJECT EMAIL: [REDACTED]</p> <p>PROJECT WEBSITE: [REDACTED]</p> <p>PROJECT STATUS: [REDACTED]</p> <p>PROJECT NOTES: [REDACTED]</p> <p>PROJECT COMMENTS: [REDACTED]</p> <p>PROJECT REVISIONS: [REDACTED]</p> <p>PROJECT APPROVALS: [REDACTED]</p> <p>PROJECT SIGNATURES: [REDACTED]</p> <p>PROJECT STAMPS: [REDACTED]</p> <p>PROJECT LOGO: [REDACTED]</p> <p>PROJECT CONTACT: [REDACTED]</p> <p>PROJECT OFFICE: [REDACTED]</p> <p>PROJECT PHONE: [REDACTED]</p> <p>PROJECT FAX: [REDACTED]</p> <p>PROJECT EMAIL: [REDACTED]</p> <p>PROJECT WEBSITE: [REDACTED]</p> <p>PROJECT ADDRESS: [REDACTED]</p> <p>PROJECT CITY: [REDACTED]</p> <p>PROJECT STATE: [REDACTED]</p> <p>PROJECT ZIP: [REDACTED]</p> <p>PROJECT PHONE: [REDACTED]</p> <p>PROJECT FAX: [REDACTED]</p> <p>PROJECT EMAIL: [REDACTED]</p> <p>PROJECT WEBSITE: [REDACTED]</p>
---	---




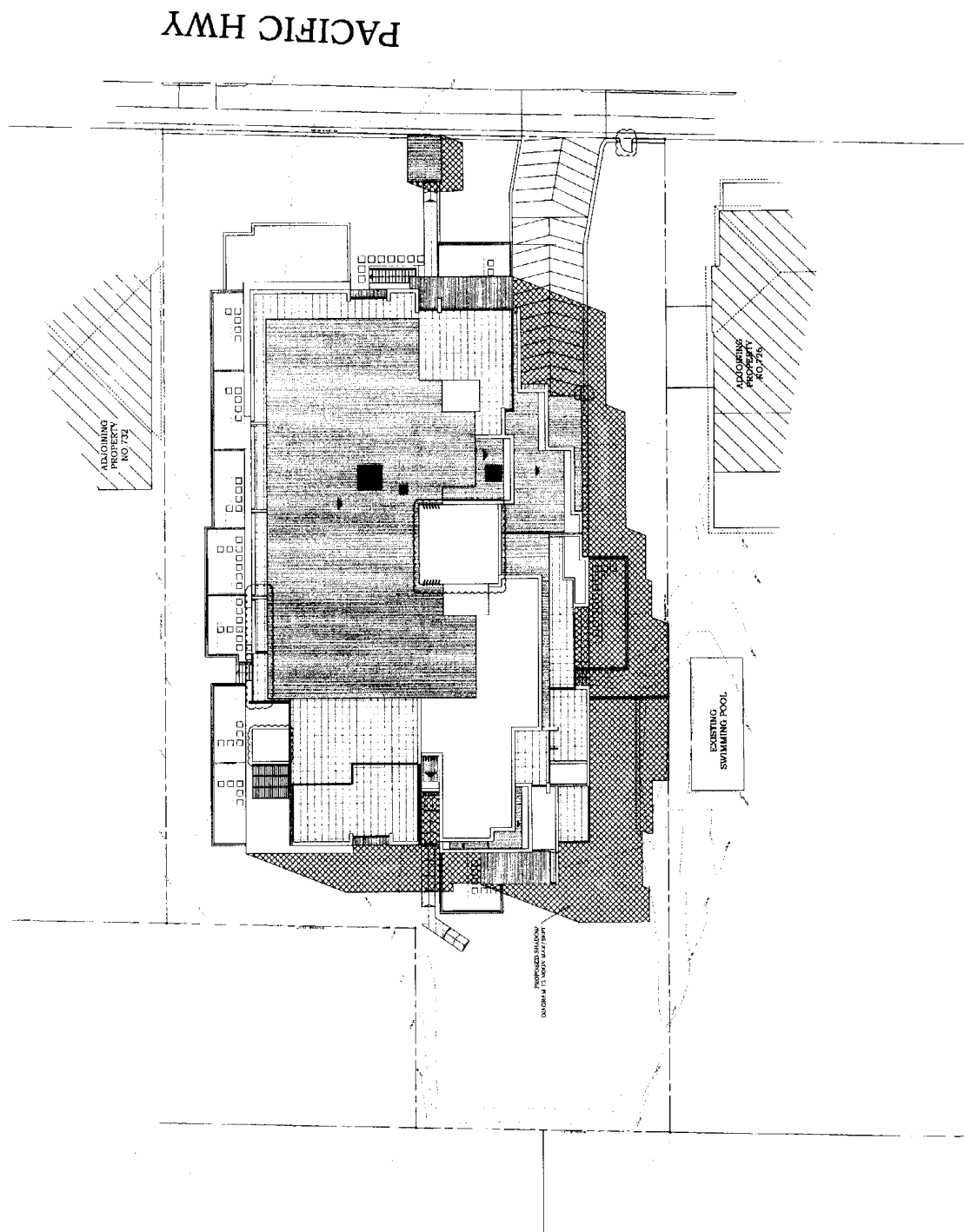
PACIFIC HWY

PROPOSED SHADOW DIAGRAM:- 3PM JUNE 22ND
SCALE: 1:100

PROPOSED ELEVATIONAL SHADOW DIAGRAM:- 3PM JUNE 22ND
SCALE: 1:100



<p>1. DRAWING NO. 2000-0000</p> <p>2. PROJECT NO. 2000-0000</p> <p>3. SHEET NO. 0000</p> <p>4. DATE 2000</p>	<p>5. PROJECT NAME</p> <p>6. PROJECT LOCATION</p> <p>7. PROJECT OWNER</p> <p>8. PROJECT ARCHITECT</p> <p>9. PROJECT ENGINEER</p> <p>10. PROJECT CONSULTANT</p>	<p>11. PROJECT DESCRIPTION</p> <p>12. PROJECT SCOPE</p> <p>13. PROJECT BUDGET</p> <p>14. PROJECT RISK</p> <p>15. PROJECT STATUS</p>	<p>16. PROJECT CONTACT</p> <p>17. PROJECT PHONE</p> <p>18. PROJECT FAX</p> <p>19. PROJECT EMAIL</p> <p>20. PROJECT WEBSITE</p>
--	--	---	--



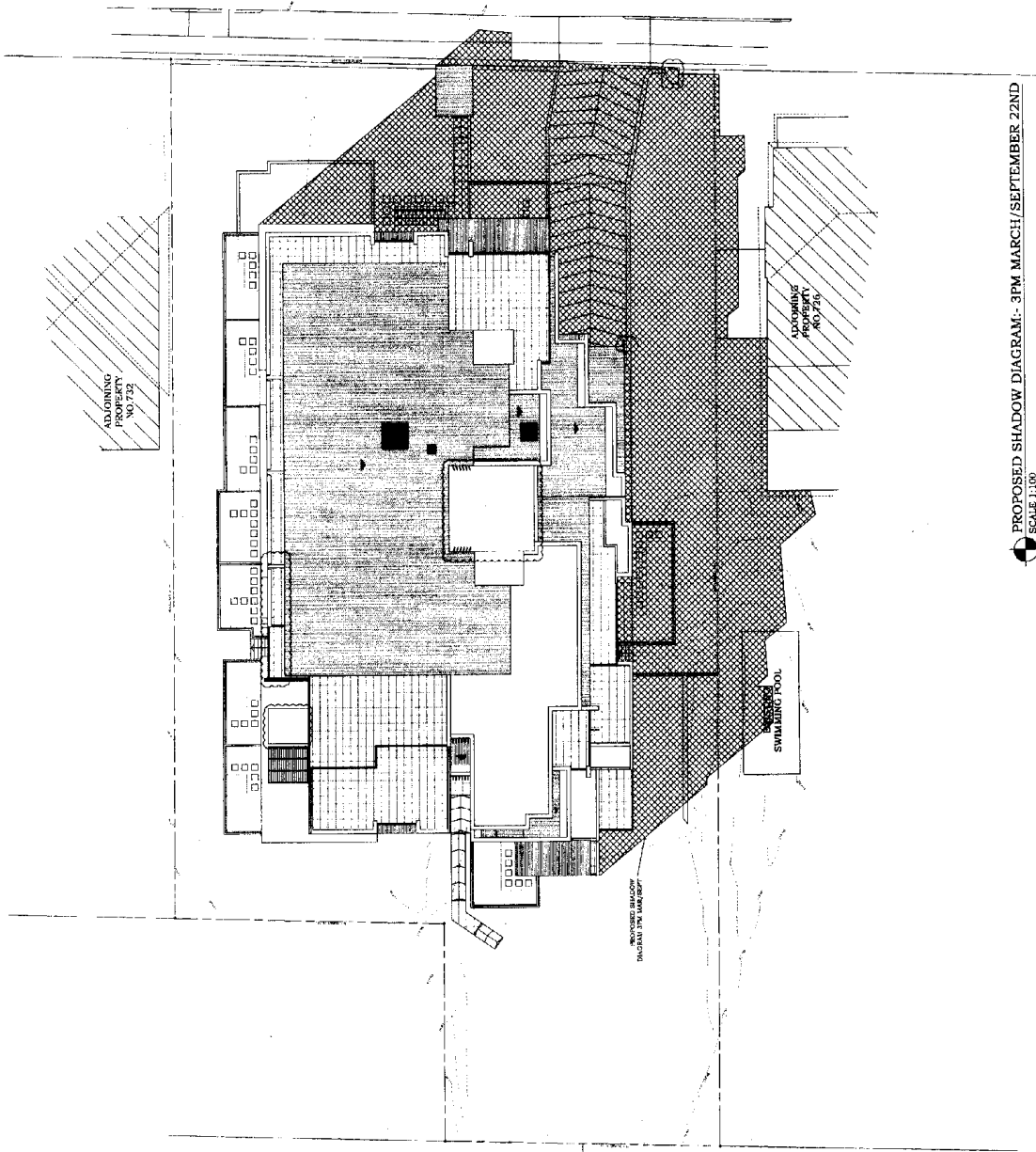
PROPOSED SHADOW DIAGRAM:- 12 NOON MARCH / SEPTEMBER 22ND

SCALE 1:100

SCALE 1:100

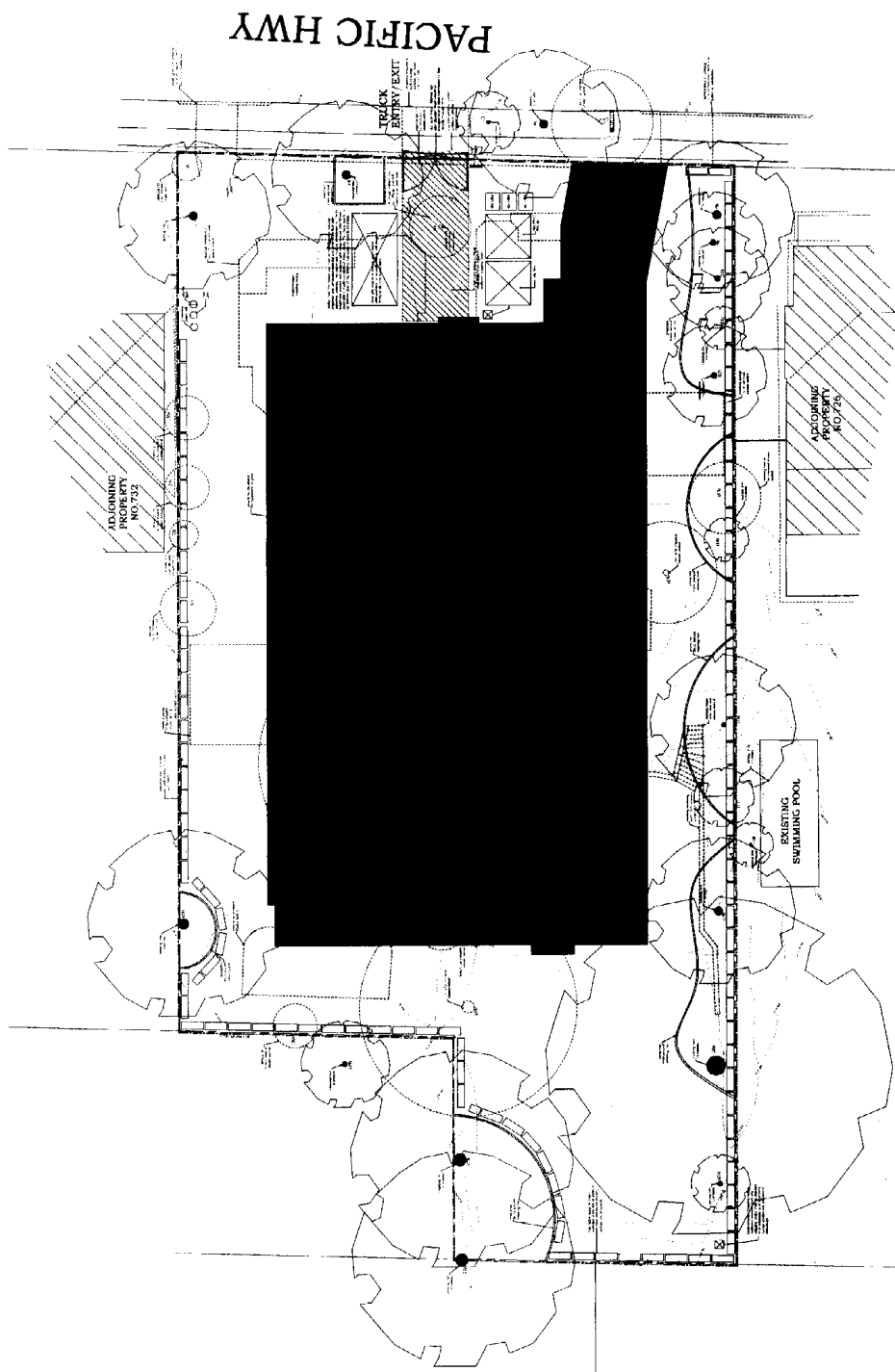
[illegible]

PACIFIC HWY



PROPOSED SHADOW DIAGRAM - 3PM MARCH/SEPTEMBER 22ND
SCALE 1:100

<p>REVISIONS:</p> <p>1. 01/01/01 - 01/01/01</p> <p>2. 01/01/01 - 01/01/01</p> <p>3. 01/01/01 - 01/01/01</p> <p>4. 01/01/01 - 01/01/01</p> <p>5. 01/01/01 - 01/01/01</p> <p>6. 01/01/01 - 01/01/01</p> <p>7. 01/01/01 - 01/01/01</p> <p>8. 01/01/01 - 01/01/01</p> <p>9. 01/01/01 - 01/01/01</p> <p>10. 01/01/01 - 01/01/01</p> <p>11. 01/01/01 - 01/01/01</p> <p>12. 01/01/01 - 01/01/01</p> <p>13. 01/01/01 - 01/01/01</p> <p>14. 01/01/01 - 01/01/01</p> <p>15. 01/01/01 - 01/01/01</p> <p>16. 01/01/01 - 01/01/01</p> <p>17. 01/01/01 - 01/01/01</p> <p>18. 01/01/01 - 01/01/01</p> <p>19. 01/01/01 - 01/01/01</p> <p>20. 01/01/01 - 01/01/01</p> <p>21. 01/01/01 - 01/01/01</p> <p>22. 01/01/01 - 01/01/01</p> <p>23. 01/01/01 - 01/01/01</p> <p>24. 01/01/01 - 01/01/01</p> <p>25. 01/01/01 - 01/01/01</p> <p>26. 01/01/01 - 01/01/01</p> <p>27. 01/01/01 - 01/01/01</p> <p>28. 01/01/01 - 01/01/01</p> <p>29. 01/01/01 - 01/01/01</p> <p>30. 01/01/01 - 01/01/01</p> <p>31. 01/01/01 - 01/01/01</p> <p>32. 01/01/01 - 01/01/01</p> <p>33. 01/01/01 - 01/01/01</p> <p>34. 01/01/01 - 01/01/01</p> <p>35. 01/01/01 - 01/01/01</p> <p>36. 01/01/01 - 01/01/01</p> <p>37. 01/01/01 - 01/01/01</p> <p>38. 01/01/01 - 01/01/01</p> <p>39. 01/01/01 - 01/01/01</p> <p>40. 01/01/01 - 01/01/01</p> <p>41. 01/01/01 - 01/01/01</p> <p>42. 01/01/01 - 01/01/01</p> <p>43. 01/01/01 - 01/01/01</p> <p>44. 01/01/01 - 01/01/01</p> <p>45. 01/01/01 - 01/01/01</p> <p>46. 01/01/01 - 01/01/01</p> <p>47. 01/01/01 - 01/01/01</p> <p>48. 01/01/01 - 01/01/01</p> <p>49. 01/01/01 - 01/01/01</p> <p>50. 01/01/01 - 01/01/01</p> <p>51. 01/01/01 - 01/01/01</p> <p>52. 01/01/01 - 01/01/01</p> <p>53. 01/01/01 - 01/01/01</p> <p>54. 01/01/01 - 01/01/01</p> <p>55. 01/01/01 - 01/01/01</p> <p>56. 01/01/01 - 01/01/01</p> <p>57. 01/01/01 - 01/01/01</p> <p>58. 01/01/01 - 01/01/01</p> <p>59. 01/01/01 - 01/01/01</p> <p>60. 01/01/01 - 01/01/01</p> <p>61. 01/01/01 - 01/01/01</p> <p>62. 01/01/01 - 01/01/01</p> <p>63. 01/01/01 - 01/01/01</p> <p>64. 01/01/01 - 01/01/01</p> <p>65. 01/01/01 - 01/01/01</p> <p>66. 01/01/01 - 01/01/01</p> <p>67. 01/01/01 - 01/01/01</p> <p>68. 01/01/01 - 01/01/01</p> <p>69. 01/01/01 - 01/01/01</p> <p>70. 01/01/01 - 01/01/01</p> <p>71. 01/01/01 - 01/01/01</p> <p>72. 01/01/01 - 01/01/01</p> <p>73. 01/01/01 - 01/01/01</p> <p>74. 01/01/01 - 01/01/01</p> <p>75. 01/01/01 - 01/01/01</p> <p>76. 01/01/01 - 01/01/01</p> <p>77. 01/01/01 - 01/01/01</p> <p>78. 01/01/01 - 01/01/01</p> <p>79. 01/01/01 - 01/01/01</p> <p>80. 01/01/01 - 01/01/01</p> <p>81. 01/01/01 - 01/01/01</p> <p>82. 01/01/01 - 01/01/01</p> <p>83. 01/01/01 - 01/01/01</p> <p>84. 01/01/01 - 01/01/01</p> <p>85. 01/01/01 - 01/01/01</p> <p>86. 01/01/01 - 01/01/01</p> <p>87. 01/01/01 - 01/01/01</p> <p>88. 01/01/01 - 01/01/01</p> <p>89. 01/01/01 - 01/01/01</p> <p>90. 01/01/01 - 01/01/01</p> <p>91. 01/01/01 - 01/01/01</p> <p>92. 01/01/01 - 01/01/01</p> <p>93. 01/01/01 - 01/01/01</p> <p>94. 01/01/01 - 01/01/01</p> <p>95. 01/01/01 - 01/01/01</p> <p>96. 01/01/01 - 01/01/01</p> <p>97. 01/01/01 - 01/01/01</p> <p>98. 01/01/01 - 01/01/01</p> <p>99. 01/01/01 - 01/01/01</p> <p>100. 01/01/01 - 01/01/01</p>	<p>DATE: 01/01/01</p> <p>BY: 01/01/01</p> <p>FOR: 01/01/01</p> <p>PROJECT: 01/01/01</p> <p>LOCATION: 01/01/01</p> <p>SCALE: 1:100</p> <p>PROJECT NO: 01/01/01</p> <p>PROJECT NAME: 01/01/01</p> <p>PROJECT ADDRESS: 01/01/01</p> <p>PROJECT CITY: 01/01/01</p> <p>PROJECT STATE: 01/01/01</p> <p>PROJECT ZIP: 01/01/01</p> <p>PROJECT COUNTRY: 01/01/01</p> <p>PROJECT PHONE: 01/01/01</p> <p>PROJECT FAX: 01/01/01</p> <p>PROJECT EMAIL: 01/01/01</p> <p>PROJECT WEBSITE: 01/01/01</p> <p>PROJECT DESCRIPTION: 01/01/01</p> <p>PROJECT STATUS: 01/01/01</p> <p>PROJECT PHASE: 01/01/01</p> <p>PROJECT BUDGET: 01/01/01</p> <p>PROJECT COST: 01/01/01</p> <p>PROJECT REVENUE: 01/01/01</p> <p>PROJECT PROFIT: 01/01/01</p> <p>PROJECT RISK: 01/01/01</p> <p>PROJECT IMPACT: 01/01/01</p> <p>PROJECT BENEFIT: 01/01/01</p> <p>PROJECT SUSTAINABILITY: 01/01/01</p> <p>PROJECT SOCIAL RESPONSIBILITY: 01/01/01</p> <p>PROJECT ETHICS: 01/01/01</p> <p>PROJECT LEGAL COMPLIANCE: 01/01/01</p> <p>PROJECT REGULATORY COMPLIANCE: 01/01/01</p> <p>PROJECT STANDARDS COMPLIANCE: 01/01/01</p> <p>PROJECT BEST PRACTICES COMPLIANCE: 01/01/01</p> <p>PROJECT INNOVATION COMPLIANCE: 01/01/01</p> <p>PROJECT QUALITY COMPLIANCE: 01/01/01</p> <p>PROJECT SAFETY COMPLIANCE: 01/01/01</p> <p>PROJECT SECURITY COMPLIANCE: 01/01/01</p> <p>PROJECT ENVIRONMENTAL COMPLIANCE: 01/01/01</p> <p>PROJECT HEALTH COMPLIANCE: 01/01/01</p> <p>PROJECT WELLNESS COMPLIANCE: 01/01/01</p> <p>PROJECT EDUCATION COMPLIANCE: 01/01/01</p> <p>PROJECT RESEARCH COMPLIANCE: 01/01/01</p> <p>PROJECT DEVELOPMENT COMPLIANCE: 01/01/01</p> <p>PROJECT MANAGEMENT COMPLIANCE: 01/01/01</p> <p>PROJECT LEADERSHIP COMPLIANCE: 01/01/01</p> <p>PROJECT TEAMWORK COMPLIANCE: 01/01/01</p> <p>PROJECT COMMUNICATION COMPLIANCE: 01/01/01</p> <p>PROJECT COLLABORATION COMPLIANCE: 01/01/01</p> <p>PROJECT PARTNERSHIP COMPLIANCE: 01/01/01</p> <p>PROJECT ALLIANCE COMPLIANCE: 01/01/01</p> <p>PROJECT NETWORK COMPLIANCE: 01/01/01</p> <p>PROJECT ECOSYSTEM COMPLIANCE: 01/01/01</p> <p>PROJECT CIRCULAR COMPLIANCE: 01/01/01</p> <p>PROJECT LINEAR COMPLIANCE: 01/01/01</p> <p>PROJECT SYSTEM COMPLIANCE: 01/01/01</p> <p>PROJECT INFRASTRUCTURE COMPLIANCE: 01/01/01</p> <p>PROJECT TECHNOLOGY COMPLIANCE: 01/01/01</p> <p>PROJECT INNOVATION COMPLIANCE: 01/01/01</p> <p>PROJECT RESEARCH COMPLIANCE: 01/01/01</p> <p>PROJECT DEVELOPMENT COMPLIANCE: 01/01/01</p> <p>PROJECT MANAGEMENT COMPLIANCE: 01/01/01</p> <p>PROJECT LEADERSHIP COMPLIANCE: 01/01/01</p> <p>PROJECT TEAMWORK COMPLIANCE: 01/01/01</p> <p>PROJECT COMMUNICATION COMPLIANCE: 01/01/01</p> <p>PROJECT COLLABORATION COMPLIANCE: 01/01/01</p> <p>PROJECT PARTNERSHIP COMPLIANCE: 01/01/01</p> <p>PROJECT ALLIANCE COMPLIANCE: 01/01/01</p> <p>PROJECT NETWORK COMPLIANCE: 01/01/01</p> <p>PROJECT ECOSYSTEM COMPLIANCE: 01/01/01</p> <p>PROJECT CIRCULAR COMPLIANCE: 01/01/01</p> <p>PROJECT LINEAR COMPLIANCE: 01/01/01</p> <p>PROJECT SYSTEM COMPLIANCE: 01/01/01</p> <p>PROJECT INFRASTRUCTURE COMPLIANCE: 01/01/01</p> <p>PROJECT TECHNOLOGY COMPLIANCE: 01/01/01</p>
---	--



ENVIRONMENTAL SITE MANAGEMENT PLAN

SCALE 1:100

SCALE 1-100
ENVIRONMENT

REVISION A

- Access driveway moved away from bore 1 & 3 structural root zone
- Material stored areas moved away from the trees structural root zone

1. The first part of the document is a list of names and their corresponding page numbers. The names are listed in a single column, and the page numbers are listed in a single column to the right of the names. The names are:

- 1. The first part of the document is a list of names and their corresponding page numbers. The names are listed in a single column, and the page numbers are listed in a single column to the right of the names. The names are:

MA ARCHITECTS
A.C. 608 340 543
3 THE DOBSON/CATLAUGH
N.E.B.M. 2008
Phone: (801) 908-7008
Fax: (801) 908-7077

ART DEVELOPMENT.
100 - 730 PACIFIC HWY
LOS ANGELES

U

Author's address: Department of Mathematics, University of California, San Diego, La Jolla, CA 92037, U.S.A.

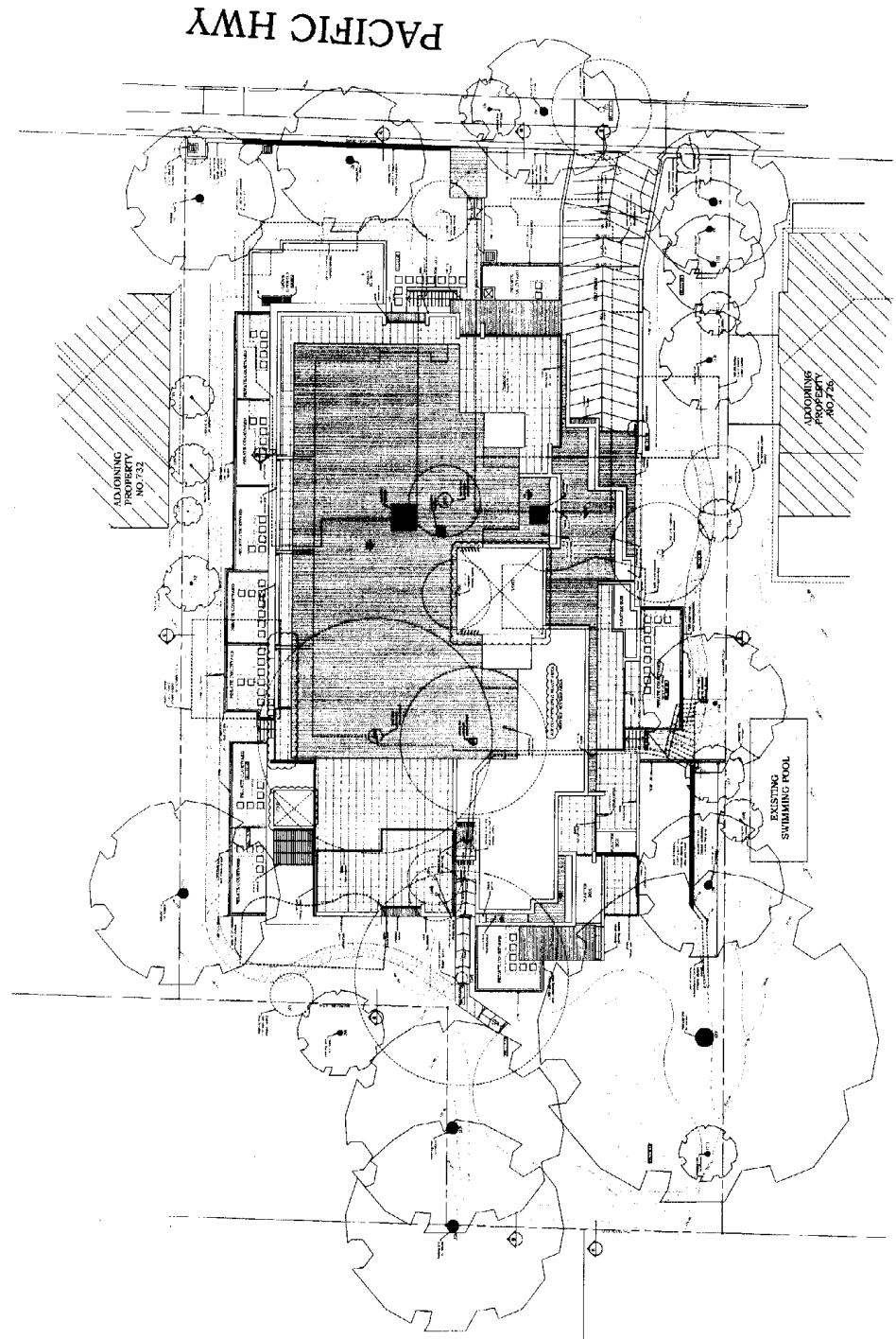
1

[illegible]

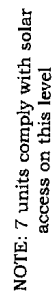
SK29A

[illegible]

Architectural drawing of a building facade. The drawing includes several labels and a compass rose. On the left, a vertical label reads 'ISA ARCHITECTS' followed by '100 WEST 10TH STREET, CHICAGO, IL 60604' and 'Phone: (312) 587-1000 Fax: (312) 587-1071'. In the center, a vertical label reads 'DEVELOPMENT, "30" ACHIC HAY' and 'EDITION'. To the right of the center, a vertical label reads 'SECTION LINE TUSI'. Further right, a vertical label reads '1 / POOL' and 'N'. On the far right, a vertical label reads '109A'. A compass rose is located in the center-right area of the drawing. The drawing itself shows a series of vertical lines and a horizontal line, suggesting a cross-section or elevation of a building.

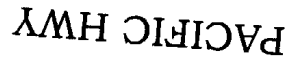


SITE/ROOF PLAN
SCALE 1:100



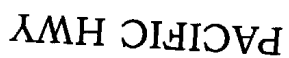
 SOLAR COMPLIANCE DIAGRAM:- THIRD FLOOR PLAN
SCALE 1:100

1. <u>PROJECT NO.</u> 10-100-1000-1000-1000 2. <u>PROJECT NAME</u> 10-100-1000-1000-1000 3. <u>PROJECT LOCATION</u> 10-100-1000-1000-1000 4. <u>PROJECT DESCRIPTION</u> 10-100-1000-1000-1000 5. <u>PROJECT STATUS</u> 10-100-1000-1000-1000 6. <u>PROJECT DATE</u> 10-100-1000-1000-1000 7. <u>PROJECT TIME</u> 10-100-1000-1000-1000 8. <u>PROJECT COST</u> 10-100-1000-1000-1000 9. <u>PROJECT BENEFIT</u> 10-100-1000-1000-1000 10. <u>PROJECT RISK</u> 10-100-1000-1000-1000 11. <u>PROJECT IMPACT</u> 10-100-1000-1000-1000 12. <u>PROJECT OUTCOME</u> 10-100-1000-1000-1000 13. <u>PROJECT EVALUATION</u> 10-100-1000-1000-1000 14. <u>PROJECT REVIEW</u> 10-100-1000-1000-1000 15. <u>PROJECT ACTION</u> 10-100-1000-1000-1000 16. <u>PROJECT FOLLOW-UP</u> 10-100-1000-1000-1000 17. <u>PROJECT REPORT</u> 10-100-1000-1000-1000 18. <u>PROJECT SUMMARY</u> 10-100-1000-1000-1000 19. <u>PROJECT CONCLUSION</u> 10-100-1000-1000-1000 20. <u>PROJECT RECOMMENDATION</u> 10-100-1000-1000-1000 21. <u>PROJECT SUGGESTION</u> 10-100-1000-1000-1000 22. <u>PROJECT NOTE</u> 10-100-1000-1000-1000 23. <u>PROJECT COMMENT</u> 10-100-1000-1000-1000 24. <u>PROJECT REMARK</u> 10-100-1000-1000-1000 25. <u>PROJECT OBSERVATION</u> 10-100-1000-1000-1000 26. <u>PROJECT ANALYSIS</u> 10-100-1000-1000-1000 27. <u>PROJECT ASSESSMENT</u> 10-100-1000-1000-1000 28. <u>PROJECT EVALUATION</u> 10-100-1000-1000-1000 29. <u>PROJECT REVIEW</u> 10-100-1000-1000-1000 30. <u>PROJECT ACTION</u> 10-100-1000-1000-1000 31. <u>PROJECT FOLLOW-UP</u> 10-100-1000-1000-1000 32. <u>PROJECT REPORT</u> 10-100-1000-1000-1000 33. <u>PROJECT SUMMARY</u> 10-100-1000-1000-1000 34. <u>PROJECT CONCLUSION</u> 10-100-1000-1000-1000 35. <u>PROJECT RECOMMENDATION</u> 10-100-1000-1000-1000 36. <u>PROJECT SUGGESTION</u> 10-100-1000-1000-1000 37. <u>PROJECT NOTE</u> 10-100-1000-1000-1000 38. <u>PROJECT COMMENT</u> 10-100-1000-1000-1000 39. <u>PROJECT REMARK</u> 10-100-1000-1000-1000 40. <u>PROJECT OBSERVATION</u> 10-100-1000-1000-1000 41. <u>PROJECT ANALYSIS</u> 10-100-1000-1000-1000 42. <u>PROJECT ASSESSMENT</u> 10-100-1000-1000-1000 43. <u>PROJECT EVALUATION</u> 10-100-1000-1000-1000 44. <u>PROJECT REVIEW</u> 10-100-1000-1000-1000 45. <u>PROJECT ACTION</u> 10-100-1000-1000-1000 46. <u>PROJECT FOLLOW-UP</u> 10-100-1000-1000-1000 47. <u>PROJECT REPORT</u> 10-100-1000-1000-1000 48. <u>PROJECT SUMMARY</u> 10-100-1000-1000-1000 49. <u>PROJECT CONCLUSION</u> 10-100-1000-1000-1000 50. <u>PROJECT RECOMMENDATION</u> 10-100-1000-1000-1000 51. <u>PROJECT SUGGESTION</u> 10-100-1000-1000-1000 52. <u>PROJECT NOTE</u> 10-100-1000-1000-1000 53. <u>PROJECT COMMENT</u> 10-100-1000-1000-1000 54. <u>PROJECT REMARK</u> 10-100-1000-1000-1000 55. <u>PROJECT OBSERVATION</u> 10-100-1000-1000-1000 56. <u>PROJECT ANALYSIS</u> 10-100-1000-1000-1000 57. <u>PROJECT ASSESSMENT</u> 10-100-1000-1000-1000 58. <u>PROJECT EVALUATION</u> 10-100-1000-1000-1000 59. <u>PROJECT REVIEW</u> 10-100-1000-1000-1000 60. <u>PROJECT ACTION</u> 10-100-1000-1000-1000 61. <u>PROJECT FOLLOW-UP</u> 10-100-1000-1000-1000 62. <u>PROJECT REPORT</u> 10-100-1000-1000-1000 63. <u>PROJECT SUMMARY</u> 10-100-1000-1000-1000 64. <u>PROJECT CONCLUSION</u> 10-100-1000-1000-1000 65. <u>PROJECT RECOMMENDATION</u> 10-100-1000-1000-1000 66. <u>PROJECT SUGGESTION</u> 10-100-1000-1000-1000 67. <u>PROJECT NOTE</u> 10-100-1000-1000-1000 68. <u>PROJECT COMMENT</u> 10-100-1000-1000-1000 69. <u>PROJECT REMARK</u> 10-100-1000-1000-1000 70. <u>PROJECT OBSERVATION</u> 10-100-1000-1000-1000 71. <u>PROJECT ANALYSIS</u> 10-100-1000-1000-1000 72. <u>PROJECT ASSESSMENT</u> 10-100-1000-1000-1000 73. <u>PROJECT EVALUATION</u> 10-100-1000-1000-1000 74. <u>PROJECT REVIEW</u> 10-100-1000-1000-1000 75. <u>PROJECT ACTION</u> 10-100-1000-1000-1000 76. <u>PROJECT FOLLOW-UP</u> 10-100-1000-1000-1000 77. <u>PROJECT REPORT</u> 10-100-1000-1000-1000 78. <u>PROJECT SUMMARY</u> 10-100-1000-1000-1000 79. <u>PROJECT CONCLUSION</u> 10-100-1000-1000-1000 80. <u>PROJECT RECOMMENDATION</u> 10-100-1000-1000-1000 81. <u>PROJECT SUGGESTION</u> 10-100-1000-1000-1000 82. <u>PROJECT NOTE</u> 10-100-1000-1000-1000 83. <u>PROJECT COMMENT</u> 10-100-1000-1000-1000 84. <u>PROJECT REMARK</u> 10-100-1000-1000-1000 85. <u>PROJECT OBSERVATION</u> 10-100-1000-1000-1000 86. <u>PROJECT ANALYSIS</u> 10-100-1000-1000-1000 87. <u>PROJECT ASSESSMENT</u> 10-100-1000-1000-1000 88. <u>PROJECT EVALUATION</u> 10-100-1000-1000-1000 89. <u>PROJECT REVIEW</u> 10-100-1000-1000-1000 90. <u>PROJECT ACTION</u> 10-100-1000-1000-1000 91. <u>PROJECT FOLLOW-UP</u> 10-100-1000-1000-1000 92. <u>PROJECT REPORT</u> 10-100-1000-1000-1000 93. <u>PROJECT SUMMARY</u> 10-100-1000-1000-1000 94. <u>PROJECT CONCLUSION</u> 10-100-1000-1000-1000 95. <u>PROJECT RECOMMENDATION</u> 10-100-1000-1000-1000 96. <u>PROJECT SUGGESTION</u> 10-100-1000-1000-1000 97. <u>PROJECT NOTE</u> 10-100-1000-1000-1000 98. <u>PROJECT COMMENT</u> 10-100-1000-1000-1000 99. <u>PROJECT REMARK</u> 10-100-1000-1000-1000 100. <u>PROJECT OBSERVATION</u> 10-100-1000-1000-1000 101. <u>PROJECT ANALYSIS</u> 10-100-1000-1000-1000 102. <u>PROJECT ASSESSMENT</u> 10-100-1000-1000-1000 103. <u>PROJECT EVALUATION</u> 10-100-1000-1000-1000 104. <u>PROJECT REVIEW</u> 10-100-1000-1000-1000 105. <u>PROJECT ACTION</u> 10-100



SOLAR COMPLIANCE DIAGRAM:- SECOND FLOOR PLAN
SCALE 1:100

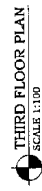
[illegible]

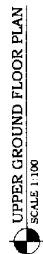


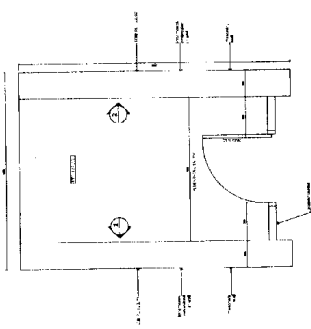
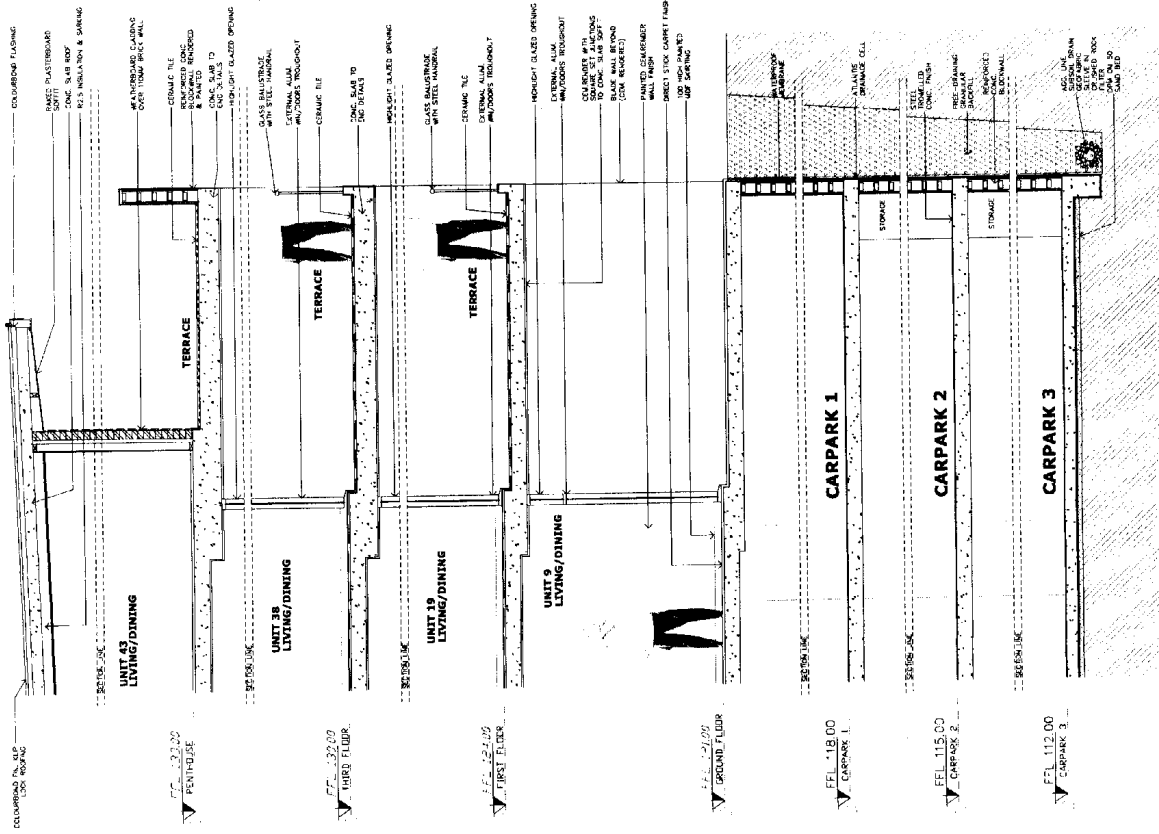
NOTE: 4 units comply with solar access on this level

 SOLAR COMPLIANCE DIAGRAM:- UPPER GROUND FLOOR PLAN
SCALE 1:100

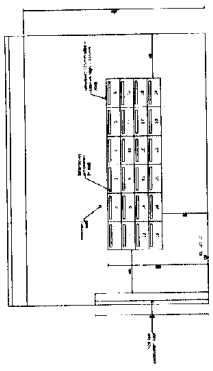
<p>SECTION 4</p> <p>1. <u>NAME OF THE COMPANY</u> <u>W. H. BROS. INC.</u></p> <p>2. <u>ADDRESS</u> <u>300 N. LAKE ST.</u> <u>CHICAGO, ILL. 60610</u></p> <p>3. <u>DATE OF ORDER</u> <u>10/15/78</u></p> <p>4. <u>QUANTITY</u> <u>1000</u></p> <p>5. <u>UNIT PRICE</u> <u>\$0.15</u></p> <p>6. <u>TOTAL PRICE</u> <u>\$150.00</u></p> <p>7. <u>TERMS</u> <u>NET 30</u></p> <p>8. <u>DATE OF DELIVERY</u> <u>10/25/78</u></p> <p>9. <u>DATE OF PAYMENT</u> <u>11/15/78</u></p> <p>10. <u>DATE OF RECEIPT</u> <u>11/15/78</u></p> <p>11. <u>DATE OF INVOICE</u> <u>10/15/78</u></p> <p>12. <u>DATE OF ORDER</u> <u>10/15/78</u></p> <p>13. <u>DATE OF DELIVERY</u> <u>10/25/78</u></p> <p>14. <u>DATE OF PAYMENT</u> <u>11/15/78</u></p> <p>15. <u>DATE OF RECEIPT</u> <u>11/15/78</u></p> <p>16. <u>DATE OF INVOICE</u> <u>10/15/78</u></p> <p>17. <u>DATE OF ORDER</u> <u>10/15/78</u></p> <p>18. <u>DATE OF DELIVERY</u> <u>10/25/78</u></p> <p>19. <u>DATE OF PAYMENT</u> <u>11/15/78</u></p> <p>20. <u>DATE OF RECEIPT</u> <u>11/15/78</u></p> <p>21. <u>DATE OF INVOICE</u> <u>10/15/78</u></p> <p>22. <u>DATE OF ORDER</u> <u>10/15/78</u></p> <p>23. <u>DATE OF DELIVERY</u> <u>10/25/78</u></p> <p>24. <u>DATE OF PAYMENT</u> <u>11/15/78</u></p> <p>25. <u>DATE OF RECEIPT</u> <u>11/15/78</u></p> <p>26. <u>DATE OF INVOICE</u> <u>10/15/78</u></p> <p>27. <u>DATE OF ORDER</u> <u>10/15/78</u></p> <p>28. <u>DATE OF DELIVERY</u> <u>10/25/78</u></p> <p>29. <u>DATE OF PAYMENT</u> <u>11/15/78</u></p> <p>30. <u>DATE OF RECEIPT</u> <u>11/15/78</u></p> <p>31. <u>DATE OF INVOICE</u> <u>10/15/78</u></p> <p>32. <u>DATE OF ORDER</u> <u>10/15/78</u></p> <p>33. <u>DATE OF DELIVERY</u> <u>10/25/78</u></p> <p>34. <u>DATE OF PAYMENT</u> <u>11/15/78</u></p> <p>35. <u>DATE OF RECEIPT</u> <u>11/15/78</u></p> <p>36. <u>DATE OF INVOICE</u> <u>10/15/78</u></p> <p>37. <u>DATE OF ORDER</u> <u>10/15/78</u></p> <p>38. <u>DATE OF DELIVERY</u> <u>10/25/78</u></p> <p>39. <u>DATE OF PAYMENT</u> <u>11/15/78</u></p> <p>40. <u>DATE OF RECEIPT</u> <u>11/15/78</u></p> <p>41. <u>DATE OF INVOICE</u> <u>10/15/78</u></p> <p>42. <u>DATE OF ORDER</u> <u>10/15/78</u></p> <p>43. <u>DATE OF DELIVERY</u> <u>10/25/78</u></p> <p>44. <u>DATE OF PAYMENT</u> <u>11/15/78</u></p> <p>45. <u>DATE OF RECEIPT</u> <u>11/15/78</u></p> <p>46. <u>DATE OF INVOICE</u> <u>10/15/78</u></p> <p>47. <u>DATE OF ORDER</u> <u>10/15/78</u></p> <p>48. <u>DATE OF DELIVERY</u> <u>10/25/78</u></p> <p>49. <u>DATE OF PAYMENT</u> <u>11/15/78</u></p> <p>50. <u>DATE OF RECEIPT</u> <u>11/15/78</u></p> <p>51. <u>DATE OF INVOICE</u> <u>10/15/78</u></p> <p>52. <u>DATE OF ORDER</u> <u>10/15/78</u></p> <p>53. <u>DATE OF DELIVERY</u> <u>10/25/78</u></p> <p>54. <u>DATE OF PAYMENT</u> <u>11/15/78</u></p> <p>55. <u>DATE OF RECEIPT</u> <u>11/15/78</u></p> <p>56. <u>DATE OF INVOICE</u> <u>10/15/78</u></p> <p>57. <u>DATE OF ORDER</u> <u>10/15/78</u></p> <p>58. <u>DATE OF DELIVERY</u> <u>10/25/78</u></p> <p>59. <u>DATE OF PAYMENT</u> <u>11/15/78</u></p> <p>60. <u>DATE OF RECEIPT</u> <u>11/15/78</u></p> <p>61. <u>DATE OF INVOICE</u> <u>10/15/78</u></p> <p>62. <u>DATE OF ORDER</u> <u>10/15/78</u></p> <p>63. <u>DATE OF DELIVERY</u> <u>10/25/78</u></p> <p>64. <u>DATE OF PAYMENT</u> <u>11/15/78</u></p> <p>65. <u>DATE OF RECEIPT</u> <u>11/15/78</u></p> <p>66. <u>DATE OF INVOICE</u> <u>10/15/78</u></p> <p>67. <u>DATE OF ORDER</u> <u>10/15/78</u></p> <p>68. <u>DATE OF DELIVERY</u> <u>10/25/78</u></p> <p>69. <u>DATE OF PAYMENT</u> <u>11/15/78</u></p> <p>70. <u>DATE OF RECEIPT</u> <u>11/15/78</u></p> <p>71. <u>DATE OF INVOICE</u> <u>10/15/78</u></p> <p>72. <u>DATE OF ORDER</u> <u>10/15/78</u></p> <p>73. <u>DATE OF DELIVERY</u> <u>10/25/78</u></p> <p>74. <u>DATE OF PAYMENT</u> <u>11/15/78</u></p> <p>75. <u>DATE OF RECEIPT</u> <u>11/15/78</u></p> <p>76. <u>DATE OF INVOICE</u> <u>10/15/78</u></p> <p>77. <u>DATE OF ORDER</u> <u>10/15/78</u></p> <p>78. <u>DATE OF DELIVERY</u> <u>10/25/78</u></p> <p>79. <u>DATE OF PAYMENT</u> <u>11/15/78</u></p> <p>80. <u>DATE OF RECEIPT</u> <u>11/15/78</u></p> <p>81. <u>DATE OF INVOICE</u> <u>10/15/78</u></p> <p>82. <u>DATE OF ORDER</u> <u>10/15/78</u></p> <p>83. <u>DATE OF DELIVERY</u> <u>10/25/78</u></p> <p>84. <u>DATE OF PAYMENT</u> <u>11/15/78</u></p> <p>85. <u>DATE OF RECEIPT</u> <u>11/15/78</u></p> <p>86. <u>DATE OF INVOICE</u> <u>10/15/78</u></p> <p>87. <u>DATE OF ORDER</u> <u>10/15/78</u></p> <p>88. <u>DATE OF DELIVERY</u> <u>10/25/78</u></p> <p>89. <u>DATE OF PAYMENT</u> <u>11/15/78</u></p> <p>90. <u>DATE OF RECEIPT</u> <u>11/15/78</u></p> <p>91. <u>DATE OF INVOICE</u> <u>10/15/78</u></p> <p>92. <u>DATE OF ORDER</u> <u>10/15/78</u></p> <p>93. <u>DATE OF DELIVERY</u> <u>10/25/78</u></p> <p>94. <u>DATE OF PAYMENT</u> <u>11/15/78</u></p> <p>95. <u>DATE OF RECEIPT</u> <u>11/15/78</u></p> <p>96. <u>DATE OF INVOICE</u> <u>10/15/78</u></p> <p>97. <u>DATE OF ORDER</u> <u>10/15/78</u></p> <p>98. <u>DATE OF DELIVERY</u> <u>10/25/78</u></p> <p>99. <u>DATE OF PAYMENT</u> <u>11/15/78</u></p> <p>100. <u>DATE OF RECEIPT</u> <u>11/15/78</u></p> <p>101. <u>DATE OF INVOICE</u> <u>10/15/78</u></p> <p>102. <u>DATE OF ORDER</u> <u>10/15/78</u></p> <p>103. <u>DATE OF DELIVERY</u> <u>10/25/78</u></p> <p>104. <u>DATE OF PAYMENT</u> <u>11/15/78</u></p> <p>105. <u>DATE OF RECEIPT</u> <u>11/15/78</u></p> <p>106. <u>DATE OF INVOICE</u> <u>10/15/78</u></p> <p>107. <u>DATE OF ORDER</u> <u>10/15/78</u></p> <p>108. <u>DATE OF DELIVERY</u> <u>10/25/78</u></p> <p>109. <u>DATE OF PAYMENT</u> <u>11/15/78</u></p> <p>110. <u>DATE OF RECEIPT</u> <u>11/15/78</u></p> <p>111. <u>DATE OF INVOICE</u> <u>10/15/78</u></p> <p>112. <u>DATE OF ORDER</u> <u>10/15/78</u></p> <p>113. <u>DATE OF DELIVERY</u> <u>10/25/78</u></p> <p>114. <u>DATE OF PAYMENT</u> <u>11/15/78</u></p> <p>115. <u>DATE OF RECEIPT</u> <u>11/15/78</u></p> <p>116. <u>DATE OF INVOICE</u> <u>10/15/78</u></p> <p>117. <u>DATE OF ORDER</u> <u>10/15/78</u></p> <p>118. <u>DATE OF DELIVERY</u> <u>10/25/78</u></p> <p>119. <u>DATE OF PAYMENT</u> <u>11/15/78</u></p> <p>120. <u>DATE OF RECEIPT</u> <u>11/15/78</u></p> <p>121. <u>DATE</u></p>
--



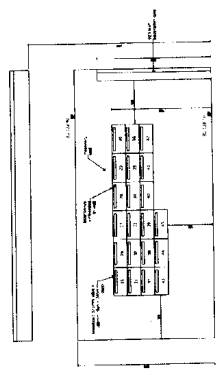




PLAN DETAIL PEDESTRIAN ENTRY
SCALE 1:20



ELEVATION 1
SCALE 1:20



ELEVATION 2
SCALE 1:20

MR. ARCHITECTS 1000 WEST 10TH AVENUE SUITE 100 DENVER, CO 80202 TEL: 333-1234 FAX: 333-5678	MR. PROJECT MANAGER 1000 WEST 10TH AVENUE SUITE 100 DENVER, CO 80202 TEL: 333-1234 FAX: 333-5678	CONSTRUCTION 1000 WEST 10TH AVENUE SUITE 100 DENVER, CO 80202 TEL: 333-1234 FAX: 333-5678	WALL DETAIL SECTION 1000 WEST 10TH AVENUE SUITE 100 DENVER, CO 80202 TEL: 333-1234 FAX: 333-5678	1000 WEST 10TH AVENUE SUITE 100 DENVER, CO 80202 TEL: 333-1234 FAX: 333-5678	SK 14 1000 WEST 10TH AVENUE SUITE 100 DENVER, CO 80202 TEL: 333-1234 FAX: 333-5678
--	---	--	---	--	---